

DECOYS & SPORTING COLLECTIBLES

Auction March 27, 2011

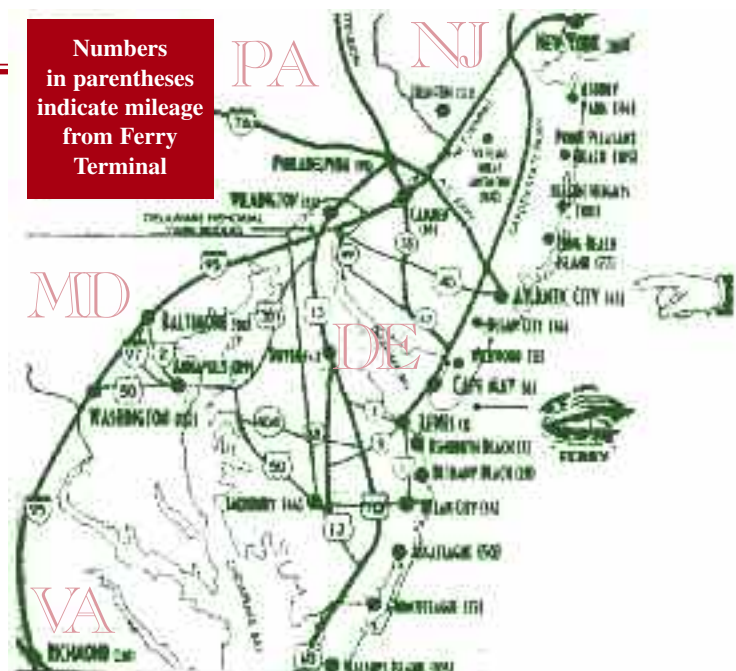
WEST CREEK FIRE HOUSE
219 RAILROAD AVENUE
WEST CREEK, NEW JERSEY

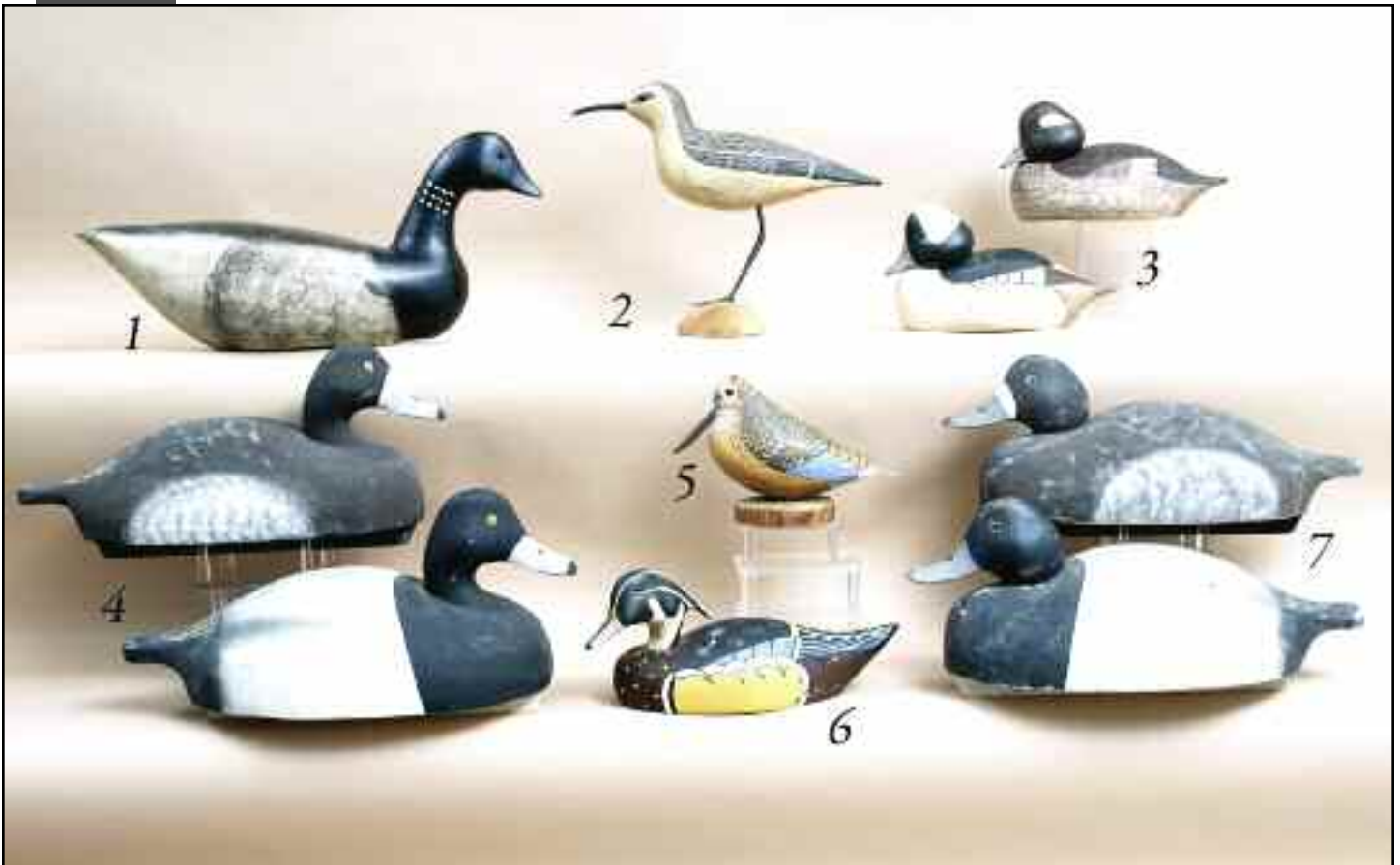
One mile north of the NJDCA show (Parkertown Fire House)

- Preview:** Saturday, March 26, 11:00 a.m. to 5:00 p.m.
Sunday, March 27, 8:00 a.m. to 10:00 a.m.
- Auction:** Sunday, March 27, 10:00 a.m. Start Time
- Directions:** Directions (from North and South): Exit 58, Garden State Parkway. Turn left on Rte. 539. Bear left on Thomas Road (follow signs for Decoy Show). Turn left on Railroad Avenue. Proceed approximately .02 mile. The firehouse will be on the left.
- Catalog:** Fully illustrated, \$25.00 (\$34.00 Outside U.S.) -- includes post sale price key.
- Information:** For auction information and absentee/phone bidding information:
Frank & Frank Sporting Collectibles LLC
422 Lakewood-Farmingdale Road
Howell, NJ 07731
Phone/Fax: (732) 938-2988
- Visit us at: www.frankandfrankdecoys.com • Email: afrank1807rh@cs.com



will be accepting
CONSIGNMENTS
for our
**FALL 2011
AUCTION**
Call Early
to reserve space!
Limited to 400 lots.





1 BRANT by Charles R. Birdsall, Pt. Pleasant, NJ. Hand-carved model, circa 1954. Very good original paint showing some in-use wear. Hollow carved. Retains bottom weight. Note on bottom: "*Part of Charles R. Birdsall's personal gunning rig.*" Charles Birdsall was the owner of Wildfowler Decoys, Pt. Pleasant, NJ. 200-300

2 VERY EARLY GREATER YELLOWLEG by the Wildfowler Decoy Company, Pt. Pleasant, NJ. Near-mint original paint and condition. Exceptionally well-executed paint by Dottie Clayton. Mounted atop wire legs on custom base. Bears early ink Wildfowler stamp. 200-300

3. FINE PAIR OF BUFFLEHEADS by the Wildfowler Decoy Company, Pt. Pleasant, NJ. Excellent original paint and unused condition. Snug-head models with fine detailed featherwork by Dottie Clayton. Both retain Wildfowler ink stamp on bottoms. Both signed DC on bottoms. 200-300

4 PAIR OF BLUEBILLS by the Wildfowler Decoy Company, Pt. Pleasant, NJ. Excellent original paint and condition. Oversized models with full keels. Weights removed. Drake retains early ink stamp on bottom. 200-300

5 RARE WOOD COCK by the Wildfowler Decoy Company, Pt. Pleasant, NJ. Near-mint original paint and condition. Large glass eyes. Six toes set atop a custom base that bears early Wildfowler ink stamp. Signed *W. Keim* under tail. 200-300

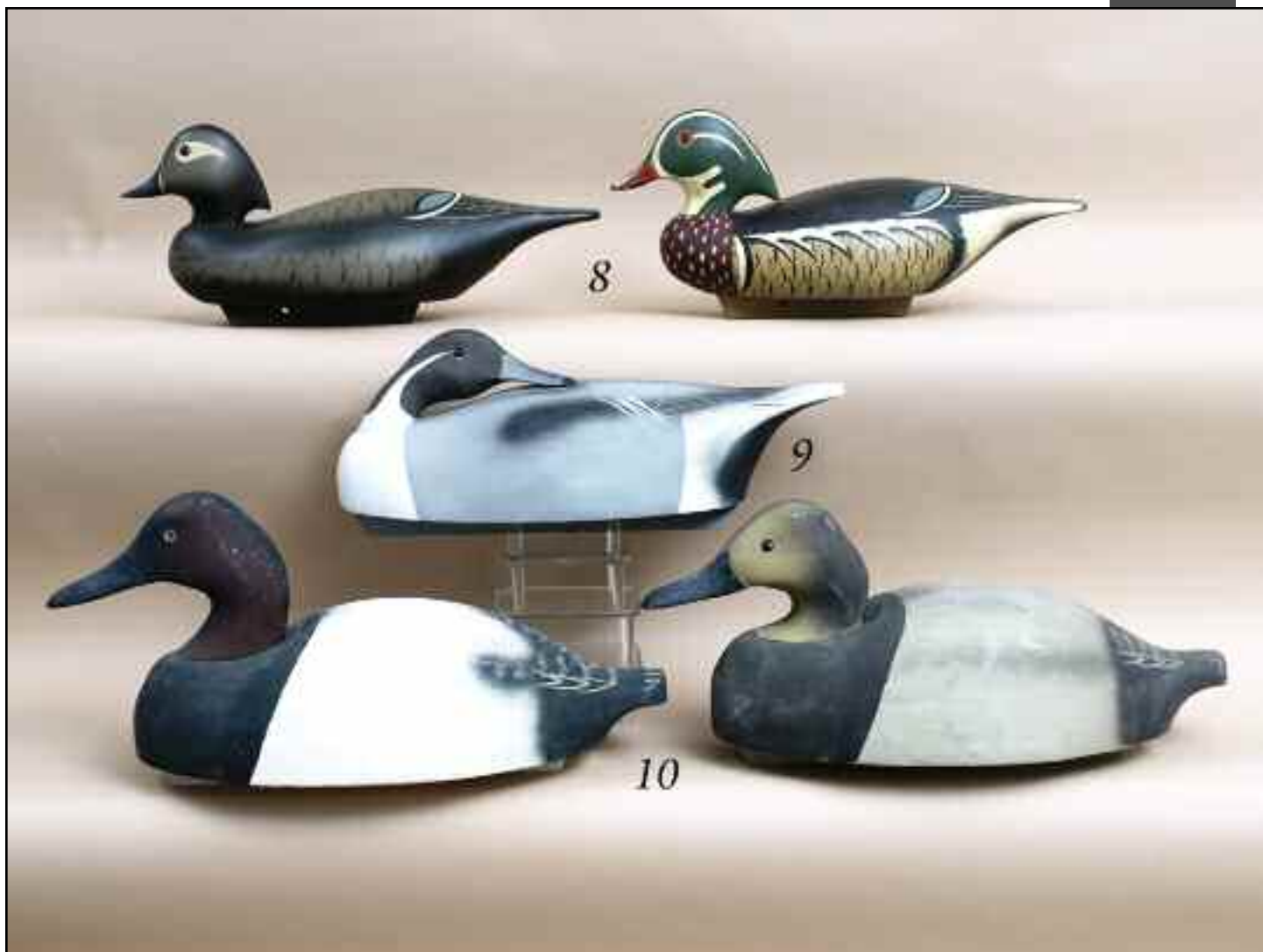
6 ONE-HALF SIZE WOOD DUCK DRAKE by the Wildfowler Decoy Company, Pt. Pleasant, NJ. Excellent original paint and condition. Some minor paint spots to left mid-back. Head turned slightly left. Retains ink Wildfowler stamp on bottom. Signed by Charles R. Birdsall and dated 1970 on bottom. 100-200

7 RARE PAIR OF BLUEBILLS by the Wildfowler Decoy Company, Pt. Pleasant, NJ. Unusual "fat jaw" models in good original paint showing some in-use wear. Structurally good condition. Both with full bottom keels. The hen with a crisp brand. The drake is double-branded. 250-350

8 OUTSTANDING AND RARE PAIR OF WOOD DUCKS by the Wildfowler Decoy Company, Pt. Pleasant, NJ. Excellent original paint and unused condition. Some very minor foxing on underside of drake's neck and bottom. Both hollow carved with cat's eye paint pattern. Both retain original keel. Crisp ink stamps. DC painted under both bills. 800-1400

9 RARE PREENING PINTAIL DRAKE by the Wildfowler Decoy Company, Pt. Pleasant, NJ. Near-mint original paint and unused condition. Rare hollow carved model. Full keel and Pt. Pleasant brand. Stenciled DGJ on bottom. 200-300

10 PAIR OF CANVASBACKS by the Wildfowler Decoy Company, Pt. Pleasant, NJ. Very good original paint and condition. The drake has a hairline crack in the lower neck. Both with full bottom keels. Both with early ink stamps. 400-500





11 **BLACK DUCK** by the Wildfowler Decoy Company, Pt. Pleasant, NJ. Rare oversized, hollow body in very good original paint showing minor wear. Retains full bottom keel. Crisp deep brand. Also branded *JON*. 100-200

12 **OVERSIZED WIDGEON DRAKE** by the Wildfowler Decoy Company, Pt. Pleasant, NJ. Very good original paint showing some in-use wear. Retains bottom keel. Very good structural condition. Dated 1976 on bottom. 200-300

13 **CANADA GOOSE** by the Wildfowler Decoy Company, Pt. Pleasant, NJ. Very good original paint with some in-use wear. Structurally very good with full keel. Crisp Pt. Pleasant brand. 200-300

14 **BRANT** by the Wildfowler Decoy Company, Pt. Pleasant, NJ. Very good original paint and structurally good condition. Minor loss to underside of bill. Retains full bottom keel. 100-200

15 **BRANT** by the Wildfowler Decoy Company, Quogue, NY. Good original paint with some paint loss to head and neck. Good structural condition. Balsa construction. Some wood loss to right side of tail. Good Quogue brand. 200-300



16 OVERSIZED BLACK DUCK by the Wildfowler Decoy Company, Pt. Pleasant, NJ. Very good original paint with minor in-use wear. Full bottom keel. Very crisp brand. 100-200

17 OVERSIZED MALLARD DRAKE by the Wildfowler Decoy Company, Pt. Pleasant, NJ. Excellent original paint and in what appears to be unused condition. Chip to underside of bill tip. Full bottom keel. Crisp brand. 100-200

18 PAIR OF OVERSIZED BLACK DUCKS by the Wildfowler Decoy Company, Pt. Pleasant, NJ. Both in what appears to be original paint with in-use wear. Both structurally sound with full keels. Both with crisp bottom brands. 100-200

19 CANVASBACK DRAKE by the Wildfowler Decoy Company, possibly Quogue, NY. Good original paint showing some in-use wear. Structurally good with bottom keel removed. Carved in an aggressive attitude. 100-200

20 PAIR OF CANVASBACKS by the Wildfowler Decoy Company, Pt. Pleasant, NJ. Very good original paint and condition with stippling to hen. Both hollow carved in the manner of the Ward Bros. Both with early Wildfowler ink stamps on bottoms. Both signed W. KEIM under bills. 500-600



21 PAIR OF BUFFLEHEADS by Charles R. Birdsall, Pt. Pleasant, NJ. Hand-carved models in near-mint original paint and condition. The hen is a snug-head model. Both hollow construction. Both with inlet weights. Both branded CRB. 500-600

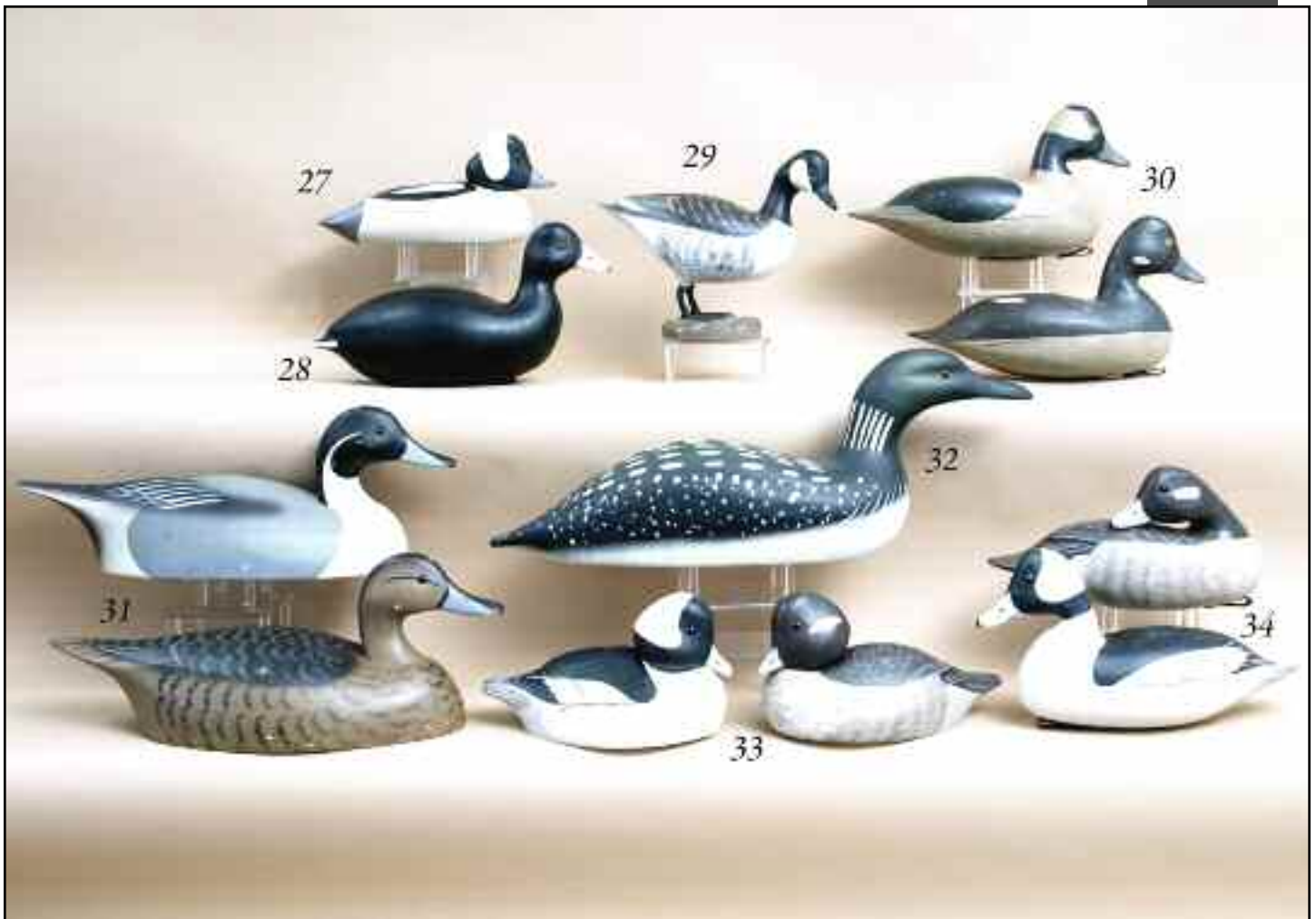
22 OVERSIZED CANADA GOOSE by Charles R. Birdsall, Pt. Pleasant, NJ. Hand-carved model in near-mint original paint and unused condition. Hollow construction. Painted feather detail. Belligerent attitude. Signed and branded CRB on bottom. 1200-1400

23 PAIR OF GREEN WING TEAL by Charles R. Birdsall, Pt. Pleasant, NJ. Near-mint original paint and condition. Hand-carved models. Hollow construction with inlet bottom weights. Both signed and branded CRB on bottoms. 500-600

24 PAIR OF GOLDENEYES by Charles R. Birdsall, Pt. Pleasant, NJ. Near-mint original paint and condition. Hand-carved models, hollow construction. Inlet weights. Signed and branded CRB on bottoms. 500-600

25 EXCELLENT PAIR OF CANVASBACKS by Charles R. Birdsall, Pt. Pleasant, NJ. Near-mint original and condition. Hand-carved models. Hollow construction with inlet bottom weights. Both with stipple back detail. Both signed and branded CRB on bottoms. 500-600

26 PAIR OF BLUEBILLS by Charles R. Birdsall, Pt. Pleasant, NJ. Near-mint original paint and condition. Both hand carved, hollow. Inlet bottom weights. Both heads slightly turned. Both signed and branded CRB on bottoms. 750-850



27 BUFFLEHEAD DRAKE by Charles R. Birdsall, Pt. Pleasant, NJ. Hand-carved model, circa 1952. Near-mint original paint and condition. Incised heart-shaped wing pattern and snug head. Signed and dated *Circa 1952* with CRB brand with duck surround. 300-400

28 COOT by Charles R. Birdsall, Pt. Pleasant, NJ. Near-mint original paint and condition. Hollow construction with inlet bottom weight. Signed on bottom and branded CRB. 200-300

29 ONE-QUARTER SIZE GOOSE by Charles R. Birdsall, Pt. Pleasant, NJ. Near-mint original paint and condition. Hand-carved in a standing position with formed feet atop a custom base. Head turned slightly right. Signed on base and branded CRB under the tail. A rare example of Mr. Birdsall's work. 300-400

30 PAIR OF BUFFLEHEADS carved in the Barnegat Bay style, by Fredrick C. Brown, Pt. Pleasant, NJ. Both in excellent original paint and condition. Hollow carved. Bottom pad weights. Very minor separation at seams. 300-400

31 PAIR OF PINTAILS by the Barnegat Bay Decoy Company, Pt. Pleasant, NJ. Excellent original paint with some minor rubs. Structurally very good condition with mid-neck crack to drake. Both retain crisp Barnegat Bay brands on bottoms. 100-200

32 WORKING LOON by the Barnegat Bay Decoys, Pt. Pleasant, NJ. Near-mint original paint and unused condition. Fine hairline check to left side. Signed by Fredrick C. Brown and A.J. Birdsall, 1988. Branded twice. 200-300

33 PAIR OF BUFFLEHEADS, New Jersey, possibly Wildfowler, in excellent original paint and condition. Fine detailed feather paint. Tucked heads. Both retain bottom pad weights. 100-200

34 PAIR OF BUFFLEHEADS carved in the Shourds style. Excellent original paint and condition. Hollow carved. The hen is a sleeper. Both with inlet bottom weights. 200-300



35 VERY EARLY BLUEBILL DRAKE by the Mason Decoy Company, Detroit, MI. Standard grade, glass eye model. Fair original paint. Structurally fair condition with open check on left side. Bottom weight removed. Very wide bill. 100-200

36 EARLY TEAL by the Mason Decoy Company, Detroit, MI. Standard grade, glass eye, with remnants of original paint. Structurally good condition. Typical bottom check. Notation on bottom: *Acquired from Somers Headley, 1974.* 100-200

37 MASON DECOY, possibly a black jack, in very old weathered paint, some of which is original. Structurally fair condition with a check the length of the back and one glass eye missing. Retains bottom weight. 100-200

38 EARLY MALLARD DRAKE by the Evans Decoy Factory, Ladysmith, WI. Weathered original paint preserved by a coat of varnish. Circular inlet weight in bottom. Both eyes intact. Nice early example of an Evans decoy. 100-200

39 EXTREMELY RARE BLUE WING TEAL DRAKE by the J.N. Dodge Decoy Factory, Detroit, MI, circa 1883. Very good original paint showing minimal in-use wear. Strong painted feather detail and breast spots. Bill carving and tack eyes. Structurally very good with some loss to neck filler. Sliver of wood missing from underside of bill. Both eyes are intact. Bottom weight removed. Factory filled areas of gesso to underside. The definitive book, *Detroit Decoy Dynasty* by Ron Sharp and Bill Dodge, page 133, Photo 5-35, shows a drake blue wing teal with a similar paint pattern. The authors discuss the rarity of a Dodge teal in original paint. This extraordinary example of the factory's early work is masterful and a true rarity. 1500-2500





40 EXTREMELY RARE BLUE WING TEAL DRAKE by the J.N. Dodge Decoy Factory, Detroit, MI, circa 1883. Very good original paint showing minimal in-use wear. Strong painted feather detail and breast spots. Structurally very good with loss to neck filler. Crack to lower right back of neck. Head has very strong facial paint detail. Bottom weight removed. Areas of gesso factory fill. An extraordinary example of Dodge's early work. 1500-2500

41 VERY EARLY PLOVER by the J.N Dodge Decoy Company, Detroit, MI. Some original paint remaining. Exhibits heavy wear with bill probably replaced. Repair to left side of head. Some minor shot scarring. See *Detroit Dynasty*, by Sharp and Dodge, page 201, Plate 51-33. 100-200





42 BLACK DUCK by Fredrick C. Brown, Jr., Pt. Pleasant, NJ. Excellent original paint and unused condition. Fine detailed painted feather work. Carved raised wing tips and carved fluted tail. Hollow construction. Retains bottom weight. Signed and dated Dec. 98. 100-200

43 FINE PINTAIL DRAKE by Fredrick C. Brown, Pt. Pleasant, NJ, circa 1982. Near-mint original paint and structurally fine condition. Hollow carved with raised carved wing tips. Elongated fluted tail. Competition grade that retains bottom pad weight. 200-300

44 FINE BRANT by Fredrick C. Brown, Jr., Pt. Pleasant, NJ. Excellent original paint and unused condition. Hollow carved with raised wing tips and broad fluted tail. Head turned slightly right. Retains bottom pad weight. Circa 1981. 200-400

45 BLUE WING TEAL DRAKE by Fredrick C. Brown, Jr., Pt. Pleasant, NJ. Near-mint original paint and condition. Hollow carved competition model. Raised relief carved wings. Head turned slightly left. Retains full bottom keel. Small pad weight. 200-300

46 FINE GREEN WING TEAL DRAKE by Fredrick C. Brown, Pt. Pleasant, NJ, circa 1981. Excellent original paint and structurally sound condition. Hollow competition grade. Raised carved wing tips and fluted tail. Retains bottom pad weight. 200-300

47 FINE PAIR OF WIDGEON by Fredrick C. Brown, Pt. Pleasant, NJ. Near-mint original paint and condition. Circa 1981. Both hollow carved. Carved raised wing tips and fluted tails. Both retain bottom weights and leather thongs. Competition models. 400-500

48 FINE PAIR OF GREEN WING TEAL by Fredrick C. Brown, Jr., Pt. Pleasant, NJ, circa 1981. Near-mint original paint and condition. Hollow carved with raised wing tips and fluted tails. Both retain bottom weights. 300-500

49 EARLY PAIR OF PINTAILS by Fredrick C. Brown, Jr., Pt. Pleasant, NJ. Excellent original paint and structurally sound condition. Both hollow carved. Both with bottom pad weights. Both branded FCB on bottom. 200-300



50 FINE PAIR OF BUFFLEHEADS by Fredrick C. Brown, Jr., Pt. Pleasant, NJ. Very good original paint with some very minor sap bleed. Both hollow carved. Raised, carved wing tips and cupped fluted tails. Both retain bottom pad weight and maker's copper tag. 300-400

51 FINE PAIR OF BLUE WING TEAL by Fredrick C. Brown, Jr., Pt. Pleasant, NJ. Near-mint original paint and structurally sound condition. Both hollow carved with raised carved wing tips and fluted tails. Both retain bottom weights. Circa 1981. 300-400

52 FINE GREEN WING TEAL DRAKE, Delaware River region, in excellent original detailed paint. Relief-carved wing detail and fluted tail. Hollow construction. Large bottom pad weight. 200-300

53 BLUE WING TEAL DRAKE, Delaware River, in good original paint and condition. Hollow, with relief-carved wings and broad fluted tail. Retains bottom pad weight. 200-300

54 BRANT, New Jersey, in excellent original paint. The head turned towards the rear. Retains bottom pad weight and rigging. Hollow carved. 100-200

55 TWO BRANT, New Jersey, carved in the Shourds style. Both in excellent original paint and unused condition. One is a sleeper, one is a swimmer. Both with bottom pad weights. 200-300

56 WIDGEON DRAKE, New Jersey, in very good original paint. Hollow carved with split tail. Head turned slightly left. Hairline crack in neck. Chip to left underside of bill. 75-125

57 WOOD DUCK DRAKE, New Jersey, in very good original paint and structurally good condition. Hollow carved with split tail carving. Head turned slightly right. 75-125

58 MALLARD DRAKE, head-of-the bay model, in original paint showing in-use wear. Structurally good condition. Hollow carved. Retains bottom weight. Retail by John Hillman. 200-300

59 PAIR OF SHOVELLERS by John Holloway, Tuckerton, NJ. Both in very good original paint and condition. Both hollow carved. Both with raised wing carving and fluted tails. Snug head models. Both retain bottom pad weights. 300-400

60 BLACK DUCK by Art Birdsall, Pt. Pleasant, NJ. Carved in the manner of Jesse Birdsall. Original paint with in-use wear. Hollow carved. Retains weight. Branded AJB. 100-200

61 PAIR OF MALLARDS by John Holloway, Tuckerton, NJ, circa 1982. Both in very good original paint with detailed feather on hen and comb feathering on drake. Both hollow carved with raised wing tips and fluted tails. Minor chip to wing tip. Bottom pad weights. Both branded JRH. 300-400

62 BLACK DUCK by Art Birdsall, Pt. Pleasant, NJ. Excellent original paint and condition. Hollow swimmer. Retains bottom weight. Branded AJB. 100-150

63 BLACK DUCK by Capt. Chip Allsop, Bay Head, NJ. Good original paint showing minor in-use wear. Structurally sound. Hollow carved. Full keel. Branded CHIP. 100-150

64 RED-BREASTED MERGANSER, New Jersey. Original paint and structurally sound condition. Hollow carved. Retains bottom pad weight. 100-200





65 PAIR OF WIDGEON by Matt Geis. Near-mint original paint and condition. Hollow construction. Fine painted feather work detail. Raised carved wing tips and fluted tails. Both retain bottom weights. Both signed. 300-400

66 FINE DOVE by Dave Rhodes, Absecon, NJ. Near-mint original paint and condition. Relief-carved with raised tips and elongated cupped tail. Signed and dated 2003 on underside of tail. 75-125

67 FINE BLACK DUCK by Matt Geis in near-mint original paint and condition. Fine painted feather detail. Hollow construction. Raised wing tips and cupped fluted tail. Head turned slightly left. 300-400

68 PAIR OF WOOD DUCKS by Matt Geis. Near-mint original paint and condition. Fine painted feather work. Hollow construction. Raised carved wing tips and broad fluted tails. Both heads turned slightly left. Both retain bottom weights. Both signed. 300-400

69 PAIR OF GREEN WING TEAL by Lou Reineri, carved in the Ward style of 1940. Near-mint original paint and condition. Bottom oval plaque signed and dated by the artist. 500-800

70 CANADA GOOSE by Matt Geis. Near-mint original paint and unused condition. Fine detailed feather paint. Hollow construction. Carved wing tips and broad, cupped and fluted tail. Head turned slightly left. Retains bottom pad weight. Signed on bottom. 200-300

71 DRAMATIC PREENING CURLEW by Forrest "Bud" Jennings, Shamong, NJ. Near-mint original paint and condition. Graceful carved head with bill nestled between carved raised wing tips. Dropped, cupped tail. Relief-carved wings. Branded *FHJ*, signed and dated 12/08. 100-200



72 MINIATURE CURLEW by Fredrick C. Brown, Pt. Pleasant, NJ. Excellent original paint and condition. Mounted on a custom base. Signed on base and dated 1980. 100-150

73 SHOREBIRD by Bob White, Tullytown, PA. Near-mint original paint and structurally sound condition. Preening model with split tail. Mounted on a custom base. Signed by maker under tail. 400-600

74 DECORATIVE RUNNING YELLOWLEG signed E. Cherry in near-mint original paint and fine structural condition. Elaborate carved feather detail with relief raised wings and carved raised wing tips. Mounted on realistic feet atop a piece of driftwood. Custom wood base that that is signed and branded E/C. 200-300

75 FINE CARVING OF A BOBWHITE QUAIL by R.D. Lewis. Fine relief carving with detail to wings. Carved from a single piece of wood. Excellent original paint and structurally sound condition. Signed and dated 1-15-81 on bottom. 100-150

76 GOLDEN PLOVER by Jim and Pat Slack. Near-mint original paint and good condition with hairline crack to underside. Split-tail carving. Mounted on a custom base. Signed by maker. 50-75

77 GROUP OF THREE SHOREBIRDS consisting of a feeding yellowleg in excellent original paint and condition, signed A.J. Birdsall, Pt. Pleasant, NJ. Together with two shorebirds mounted on wood bases. Also included is a black duck head in original paint. 75-125

78 MINIATURE CANADA GOOSE by Peachy Perrine, Barnegat Light, NJ. Original paint and excellent condition. Split tail carving. Mounted on a signed base. Together with a MINIATURE GOOSE attributed to K.A. Cranmer, Ship Bottom, NJ, in original paint and condition. Mounted on a base with artist's stamp and dated Nov. 6, 1960. 100-150

79 MINIATURE SNEAK BOX by Harold Crane, Manahawkin, NJ. Excellent original paint and condition. Two miniature oars. Mounted in a custom plexiglass box. Box dimensions are approximately 8" x 4". 50-75

80 TWO SHOREBIRDS by Dave Rhodes. The first is a PEEP in excellent original paint and condition. Split tail carving. Also, a SNIPE in excellent original paint with split-tail carving. Both signed by maker and dated '74 under tails. Both mounted on driftwood bases. 100-200





81 ORNATELY CARVED BRISTLE-THIGHED CURLEW by Robert Kurkewicz, Manistee, MI. Excellent original detailed paint. Fine feather carving with relief-carved wings and fluted tail. Mounted atop a custom base. Signed on bottom. 150-250

82 WHIMISICAL FOX by Grayson Chesser, Jenkins Bridge, VA, depicting a toothy fox with alert ears, bushy tail and large, dark eyes. Signed on bottom. 200-300

83 MEADOW LARK by Robert Kurkewicz, Manistee, MI. Excellent original paint with fine detailed feather work overall. Relief-carved wings and broad fluted tail. Mounted atop a custom base. 100-200

84 PAIR OF FINE KING FISHERS by Ron Sabatini, Levittown, PA. Near-mint original paint and structural condition. Both carved in the Delaware River manner with relief-carved wings and raised carved wing tips. Long fluted tails. Both mounted on branches atop a custom base. Both birds and base signed and dated 2010. 250-350



86 BLACK- BREAST PLOVER in very good original paint and structurally good condition. Some wood loss near stick placement hole. Mounted on a wood base. Together with a **WORKING DOVE DECOY** by Harry P. Megargee in excellent original paint and condition. Flat bottom stamped HPM 91. 100-200

87 HAND-COLORED LITHOGRAPH by Alexander Pope, Jr., depicting a pair of canvasbacks in tall marsh grasses. Good image with in-painting to some of upper edge. Signed LR. Professionally framed, matted and glazed. Image size approximately 14" x 19 3/4". 250-350

88 PAIR OF DOVES by Ron Sabatini, Levittown, PA. Near-mint original paint and condition. Both with fine painted feather work. Both with deep relief-carved wing detail and elongated tail feathers. Both signed by maker under tails. Mounted on custom bases. 200-300

89 MINIATURE SWAN by Capt. Jess Urie, Rock Hall, MD. Excellent original paint. Good structural condition with typical crack at mid-neck. Together with a **MINIATURE CANADA GOOSE** by Capt. Jess Urie in excellent original paint and condition. Both signed on bottom. 75-125

90 FULL-SIZE SONGBIRD, possibly a finch, in excellent original paint. Relief-carved wing detail. Mounted on wood base. 100-150

91 MINIATURE HEN by Roger Mitchell, Kingston, MA. Near-mint original paint and condition. Split-tail carving. Mounted atop a custom base. Maker's stamp on bottom. 100-150

92 MINIATURE GOLDENEYE DRAKE by Roger Mitchell, Kingston, MA. Near-mint original paint and split-carved tail. Carved rock base. Signed. 100-150

93 MINIATURE CORMORANT DRAKE by Roger Mitchell, Kingston, MA. Near-mint original paint and condition. Mounted on a custom carved base. Maker's stamp on bottom. 100-150.

94 FINE PAIR OF ONE-HALF SIZE BLUEBILLS by Roger Mitchell, Kingston, MA. Both with excellent original paint. Fine relief carved wing detail. Both with fluted cupped tails. Both heads turned. 100-150

95 THREE DOVES by Harry P. Megargee, Bozman, MD. Excellent original paint and condition. All with raised carved wing tips. All carved in different positions. One branded HPM. Mounted on a wood base. 200-300

96 FULL-BODIED BLACK DUCK DRAKE STICK-UP by Harry P. Megargee, Jr., Bozman, MD. Excellent original paint and condition. Carved as a sleeper with raised crossed wing tips and fluted tail. HPM branded twice in bottom. Mounted on wood base. 200-300

97 FULL-BODIED MALLARD HEN STICK-UP by Harry P. Megargee, Jr., Bozman, MD. Excellent original paint and condition. Carved as a sleeper with raised crossed wing tips and fluted tail. HPM monogram in bottom. Mounted on wood base. 200-300



98 THREE MINIATURE CARVINGS by Harry P. Megargee, Bozman, MD, consisting of a pair of canvasbacks and a redhead drake. All in original paint showing minor shelf marks and flaking. All signed *HPM, JR.*, 1946. 100-200

99 OUTSTANDING PAIR OF MINIATURE RED-BREAST MERGANSERS by Roger Mitchell, Kingston, MA. Both in near-mint original paint and condition. Both with split-carved tails and carved crests. Mounted on carved clam shell base. Maker's stamp. 200-300

100 SMALL PEEP in excellent original paint and condition. Mounted on a piece of driftwood. Together with a **MINIATURE FLATTY KILLDEER** by D. MacKenzie, mounted on wire legs atop a painted base. 50-75

101 PAIR OF MINIATURE BUFFLEHEADS by Ron Sabatini, Levittown, PA. Near-mint original paint and condition. Carved in the Delaware River style. Both with raised carved wing tips and fluted tails. Both with detailed painted feather work. Both with heads turned slightly left. 100-200

102 ONE-QUARTER SIZE CANADA GOOSE by Ron Sabatini, Levittown, PA. Near-mint original paint and condition. Carved in a swimming position. Relief wings, carved wing tips and fluted tail. Signed and dated 2010 on bottom. 50-100

103 MINIATURE BLACK DUCK by Ron Sabatini, Levittown, PA. Near-mint original paint and condition. Carved in a preening position. Fine detailed feather work. Raised carved wing tips and fluted tail. Signed and dated '09 on bottom. 50-100

104 MINIATURE CANVASBACK HEN by Frank Finney, Cape Charles, VA. Shows fine detailed paint. Signed *FF* on bottom. Together with a miniature cast bronze wing duck attributed to Dr. George Starr. All in very good condition. 200-300

105 DAINTY MINIATURE MALLARD HEN by John "Jack" Wood, Hamilton, NJ. Near-mint original paint with detailed feather work. Excellent structural condition. Head carved in a sleeping position. Raised carved wing tips. Miniature weight. Signed by maker. Accompanied by *Second Place Best in Show* ribbon from the Toms River Art and Decoy Festival, 2011. 100-200

106 PLAQUE with two one-quarter size flying mallards by Roger Mitchell, Kingston, MA. Plaque size approximately 13" x 18 1/2". 100-150





107 OVERSIZED WOOD DUCK DRAKE by R.W. Smoker, Marion, MD. Excellent original paint and condition. Deep relief carving and raised wing tips. Hollow construction. Full bottom keel. Head turned slightly left. Signed on bottom and dated 2000. 200-400

108 OVERSIZED MALLARD DRAKE by R.W. Smoker, Crisfield, MD. Near-mint original paint and condition. Carved in a preening position. Deep relief carving to wings. Hollow construction. Unique bottom keel constructed with a battery-operated calling box. Signed on bottom. 200-400

109 PREENING GADWALL by R.W. Smoker, Marion, MD. Near-mint original paint and condition. Deep relief carved raised wings and tips. Very fine detailed painted feather work. Hollow construction with deep keel. Signed on bottom. 200-400

110 OVERSIZED WIDGEON DRAKE by R.W. Smoker, Crisfield, MD. Near-mint original paint and condition. Hollow construction. Deep relief-carved wings with raised wing tips. Full bottom keel. Signed and dated 1998 on bottom. Head turned slightly right. 200-400

111 OVERSIZED WOOD DUCK DRAKE by R.W. Smoker, Crisfield, MD, 1998. Excellent original paint and condition. Deep relief carving and raised wing tips. Hollow construction. Full bottom keel. Head turned slightly right. Signed on bottom. 200-400

112 OVERSIZED WIDGEON DRAKE by R.W. Smoker, Crisfield, MD. Near-mint original paint and condition. Hollow construction. Deep relief-carved wings with raised wing tips. Full bottom keel. Signed and dated 1998 on bottom. Head turned slightly left. 200-400



113 MALLARD DRAKE by Charlie Joiner, Chestertown, MD, circa 1985. Near-mint original paint and condition. Retains bottom weight, ring and staple. Signed and dated 1985. 700-900

114 CANADA GOOSE by Charlie Joiner, Betterton, MD, circa 1953. Excellent original paint and unused condition. Some minor shelf marks. Structurally excellent. Signed and dated 1953 on bottom. 1500-1800

115 CANVASBACK DRAKE by Charlie Joiner, Chestertown, MD. Excellent original paint and structurally sound condition. Originally painted in 1965, stripped and re-painted in 2008 at the owner's request. Signed and dated twice. 600-800

116 CANVASBACK DRAKE by Tom Loftin. Excellent original paint and condition. Sleeper. Together with a **PINTAIL DRAKE** by Bobby Jobes in very good original paint and condition. Both signed. 100-150

117 CANVASBACK HEN, probably by Paul Gibson, Havre de Grace, MD. Excellent original paint, possibly by R. Madison Mitchell. Retains bottom weight, ring and staple. 75-125

118 GOLDENEYE DRAKE from the shop of R. Madison Mitchell, Havre de Grace, MD. Very good original paint with minor scuffs. Structurally unused condition. Retains ballast weight, ring and staple. Signed on bottom *R. Madison Mitchell* and dated 1955. 300-500

119 PAIR OF PREENING BLUE BILLS by Patrick Vincenti, Havre de Grace, MD. Excellent original paint and unused condition. Both retain original keel weights, rings and staples. Both signed and dated 1993. 100-200



120 TWO CANVASBACK DRAKES, Upper Bay, in weathered working paint and structurally good condition. One with EN carved in bottom. One with bottom mule shoe weight. 100-200

121 HAND-COLORED LITHOGRAPH by Alexander Pope, Jr., depicting two blue bills in an aquatic setting with lighthouse in background. Trimmed to image and in generally good condition. Some very minor foxing. Original period ogee frame. Image size approximately 14" x 20". 300-400

122 CANVASBACK DRAKE from the Upper Bay region. Excellent original paint and condition. Carved as a wing duck. Unusual glass eyes. Piece of fiberboard affixed to bottom. 200-300

123 VERY EARLY BLACK DUCK by William Heverin, Charlestown, MD. Very old working paint and sound structural condition. Retains bottom weight, ring and staple. 100-200

124 EARLY CANVASBACK DRAKE, possibly Virginia, in original paint and good condition. Two-piece neck construction. Tight check on back. Unused condition. 200-300

125 CANVASBACK DRAKE by Harry P. Megargee, Jr., Bozman, MD. Good original paint with some scuffs and minor sap bleed. Hollow construction. Relief wing tips. Signed and dated 1956 on bottom. 100-200

126 CANVASBACK DRAKE carved in the style of the Ward Bros., in very good original paint and unused condition. Head turned slightly left. Repaired crack at left neck base. 200-300



127 COOT by Capt. Harry Jobs, Aberdeen, MD. Excellent paint. Fair condition with some back checks. Together with a COOT from the Upper Bay in good original paint and condition. 75-150

128 HAND-COLORED LITHOGRAPH by Alexander Pope, Jr., depicting a pair of red heads in an aquatic setting. Bright image, framed and matted. Image size approximately 13" x 19". Signed LR. Framed and glazed with an accompanying description of red heads on verso. 300-400

129 GROUP OF THREE CANVASBACK DRAKES. All in very good paint and condition. One is a high head. 100-150

130 BLUE WING TEAL DRAKE, Upper Bay, in weathered working paint and structurally sound condition. Together with a **BLUE WING TEAL DRAKE** by Bob Jobs in very good original paint and condition. 75-125

131 UPPER BAY BLUE BILL, possibly John Glenn, Rock Hall, MD. Old working paint, structurally good. Together with a **BLUEBILL L DRAKE**, Upper Bay, in old working paint. 75-125

132 CANVASBACK DRAKE by Jim Hutchins, carved in the Ward style, in very good original paint and unused condition. Together with a **BLUE BILL DRAKE** by M. Robinson, carved in the Ward "fat jaw" style. Original paint and unused condition. Both signed on bottoms. 100-200



133 CANVASBACK HEN attributed to R. Madison Mitchell, Havre de Grace, MD. Excellent original paint and structurally sound condition. Head turned slightly right. Retains bottom keel weight and rigging staple. 100-150

134 HAND-COLORED LITHOGRAPH by Alexander Pope, Jr., depicting two black ducks in a tranquil pond setting. Bright images. Signed LL. Professionally framed, matted and glazed. Image size approximately 13" x 19 1/2". 300-400

135 CANVASBACK HEN from the Susquehanna Flats, Havre de Grace area. Possibly an early Mitchell. Very old working paint and structurally good condition. Check to back and shot scars. Retains weight, ring and staple. 75-125

136 BLUEBILL DRAKE attributed to Doug Jester, Chincoteague, VA. Old working paint and structurally very good condition. Early example with inlet weight. Ring and staple intact. 75-125

137 BLACK DUCK by Ira Hudson, Chincoteague, VA. Very weathered paint, some of which may be original. Very good structural condition. Paint exhibits fine overall feather work and strong speculum paint. Some paint loss to right side. Retains bottom weight. 200-300

138 BLUEBILL DRAKE by Ira Hudson, Chincoteague, VA. Professional restoration by Bob Seabrook. Solid carved model. Structurally good condition. 300-400

139 FINE BUFFLEHEAD DRAKE attributed to a member of the Jester family, Chincoteague, VA, dated 1951. Excellent original paint and structurally sound condition. 100-200

140 BLACK DUCK attributed to John Henry Downes, Townsend, VA. Old working paint with head restored. Structurally good condition. Deep ice groove. Retains weight. For a similar example see *Southern Decoys* by H. Fleckenstein, Jr., page 164, Photo 312. 100-200

141 EARLY CANVASBACK by Ira Hudson, Chincoteague, VA. Very old working paint, possibly by Hudson. Structurally good condition with repaired crack in neck. Retains bottom pad weights. 200-300

142 VERY EARLY PINTAIL DRAKE by Miles Hancock, Chincoteague, VA. Retains very old working paint with some possibly the original. Structurally good with a repaired crack to lower neck. Retains bottom pad weight and rigging staple. 300-400

143 BLACK DUCK by Miles Hancock, Chincoteague, VA. Very good original paint and structurally sound condition. Very good scratch feather paint on body. Retains bottom weight. Some flaking from in-use wear. 100-200



144 VERY FINE PINTAIL HEN by the L.T. Ward Bros., Crisfield, MD, circa 1940's. Outstanding original paint and structurally fine condition. Some minor crazing to filler where neck meets the body. Appears to be three shot dents on right side near speculum. Head is turned very slightly left. Retains keel with bottom weight. Excellent original untouched condition. For similar examples, see *Ward Decoys* by R. Gard and B. McGrath. 8000-12000



145 CANADA GOOSE, possibly a juvenile goose, which is a rigmate to Lot 146, in very good original paint and unused condition. Retains bottom weights that appear to have been added at a later date. 19" from the tip of the tail to the tip of the bill. Classic American folk art. 1200-1800

146 VERY EARLY CANADA GOOSE, possibly mid-West, in very good original paint and unused condition. Some flaking in body seam and at neck joint. Possibly a very early factory decoy by an unknown maker. Discovered in Colorado. Retains lead pad weight on bottom which may have been a later addition. Rigmate to Lot 145. Fine American folk art example. 1200-1800



147 MALLARD DRAKE in excellent original paint and unused condition. Deep relief-carved wings and chip-carved feathers. Great folk art example. Formerly in the Fred Noyes collection. Stamped 987. 300-400

148 FULL-BODIED CANADA GOOSE by Daniel Tienhenske, Bay Shore, NY, circa 1950. Excellent original paint and very good condition. Hairline crack in bill. Very minor filler missing at neck near base. Hollow construction. Unrigged. Relief raised wings and split wing tips. Head turned boldly left. See July-August 2007 issue of *Decoy Magazine* for a rigmate to this decoy, in addition to many examples of his work. Mr. Tienhenske won Best of Show at the Exhibition of Wildfowl Decoys in New York City, April, 1924. 1200-1500

149 BLUEBILL DRAKE attributed to Chauncey Wheeler, Alexandria Bay, NY. Good original weathered paint showing in-use wear. Structurally good condition with numerous shot scars. Left eye missing. Bottom weight removed. 200-300

150 GOLDENEYE DRAKE by John Moir, Smith Falls, Ontario. Weathered original comb paint. Some possible touch up to head area. Together with a GOLDENEYE DRAKE, probably New York, in old working paint and good structural condition. 100-200

151 RARE BLACK DUCK by John Lee Baldwin, Babylon, NY. Appears to be good original paint and sound structural condition. Cork body with wood head and bottom board. 200-300

152 GOLDENEYE DRAKE, New York, in old working paint. Together with a GOLDENEYE DRAKE in original paint. 100-200

153 WIDGEON DRAKE by attributed to William Bowman, Lawrence, NY. Very old working paint showing considerable in-use wear. Some shot scarring. Repair to bottom of bill. Branded FSM on bottom. 200-300



154 VERY FINE LARGE LOON by Forrest Jennings, Shamong, NJ. Near-mint original paint and condition. Hollow carved with relief-carved wings and carved crossed wing tips. Head turned upward and to the left. Retains the full bottom keel. Maker's brand on bottom and signature with notation: *Best of Show Chestertown, MD, 10/1988*. 600-800

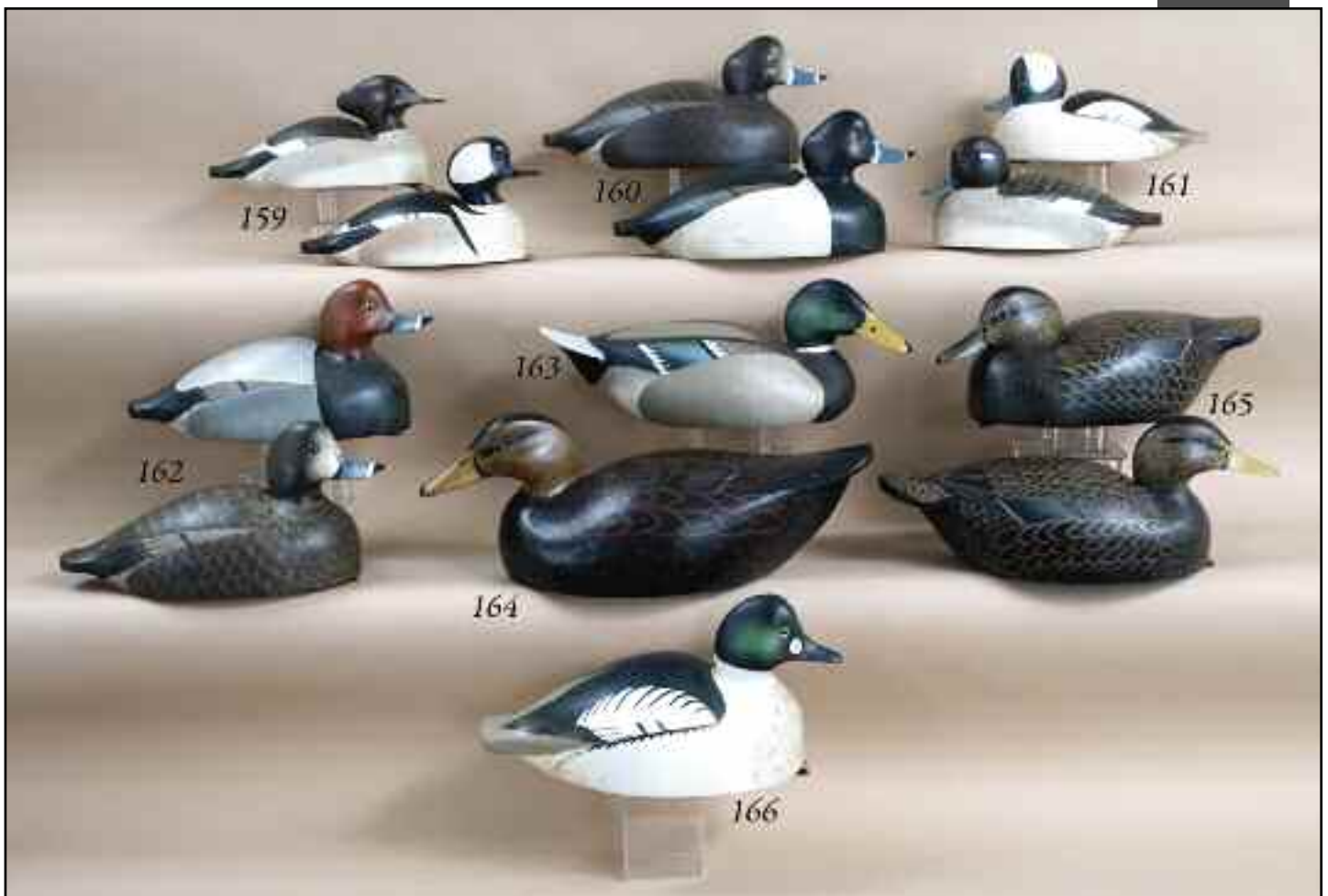
155 WORKING LOON by Harry P. Megargee, Bozman, MD. Excellent original paint and condition. Hollow carved working decoy in unused condition. Head carved in an alert position. Branded *HPM* twice. Signed and dated 1979. 200-300

156 ONE-HALF SIZE BLACK SWAN by Jim Pierce, Havre de Grace, MD. Excellent original paint and condition. Together with two **COMMON LOONS** in original paint and condition. Probably Maine. 100-200



157 OUTSTANDING CURLEW, probably New England, in excellent original paint preserved by a coat of varnish. Detailed feather work on breast, sides, neck and head. Structurally excellent. Shoe button eyes and inset original bill. Very fine example of an early curlew. 800-1200

158 CANADA GOOSE by Joe Lincoln, Accord, MA. Weathered paint, some of which appears original. The black paint on head and tail appear to have touch up. White area on face appears to have touch up. Hairline crack in upper neck and two typical open cracks in bottom. Weight removed. A stately example of this maker's work. For literature, see *The Great Book of Decoys*, J. Engers, page 48, and *New England Decoys*, by J. and S. Delph. 800-1200



159 PAIR OF HOODED MERGANSERS by Bill Cranmer, Beach Haven, NJ. Both in original paint. Drake with sap bleed on breast and front of face and hood. The hen with check the length of bottom. Both hollow carved with inlet weights. 300-400

160 PAIR OF RING NECKS by Bill Cranmer, Beach Haven, NJ. Both in excellent original paint and very good condition. Both hollow carved with inlet bottom weights. Both with fine painted feather detail. 400-600

161 RARE PAIR OF BUFFELHEADS by William Cranmer, Beach Haven, NJ. Good original paint and fine structural condition. Both with some sap bleed on breasts. Both with very good feather paint work. Both hollow carved. Both with inlet bottom weights. Both signed and dated 1981. 400-600

162 PAIR OF REDHEADS by William Cranmer, Beach Haven, NJ, circa 1980. Excellent original paint and condition. Hollow carved. Inlet bottom weights. Signed and dated. 400-600

163 FINE MALLARD DRAKE by William Cranmer, Beach Haven, NJ. Excellent original paint and structurally sound condition, circa 1970's. Fine detailed feather work. Head turned boldly right. This is Mr. Cranmer's finest period of carving. 300-500

164 FINE BLACK DUCK by William Cranmer, Beach Haven, NJ. Excellent original paint and good structural condition. Hollow carved with head turned slightly left. Keel removed. Branded and signed under bill. 300-400

165 VERY FINE PAIR OF BLACK DUCKS by William Cranmer, Beach Haven, NJ. Both in near-mint original paint and condition. Both hollow carved. Both with very fine painted feather detail. Both identified and dated 1980 on bottoms. 400-600

166 GOLDENEYE DRAKE by Bill Cranmer, Beach Haven, NJ. Original paint with sap bleed and crazing on breast and underside of tail. Hollow carved. Inlet bottom weight. 200-300





167 VERY EARLY PAIR OF WIDGEON attributed to William Cranmer, Beach Haven, NJ. Excellent original paint in what appears to be unused condition. Both hollow construction with full deep keels. The drake is branded *HORNOR* twice, the hen branded once. An outstanding early pair of New Jersey decoys. 500-700

168 BLACK DUCK by A. Elmer Crowell, East Harwich, MA. Very good Crowell paint that appears to be a second coat. Very early pre-brand model. Structurally very good with a check on the back and crack on bottom. Branded *E FLAGG* on bottom. 500-800

169 VERY EARLY WIDGEON DRAKE by A. Elmer Crowell, East Harwich, MA. Remnants of paint remaining. Structurally good condition with body checks and scarring. Bottom weights removed. Large oval Crowell brand. 200-300

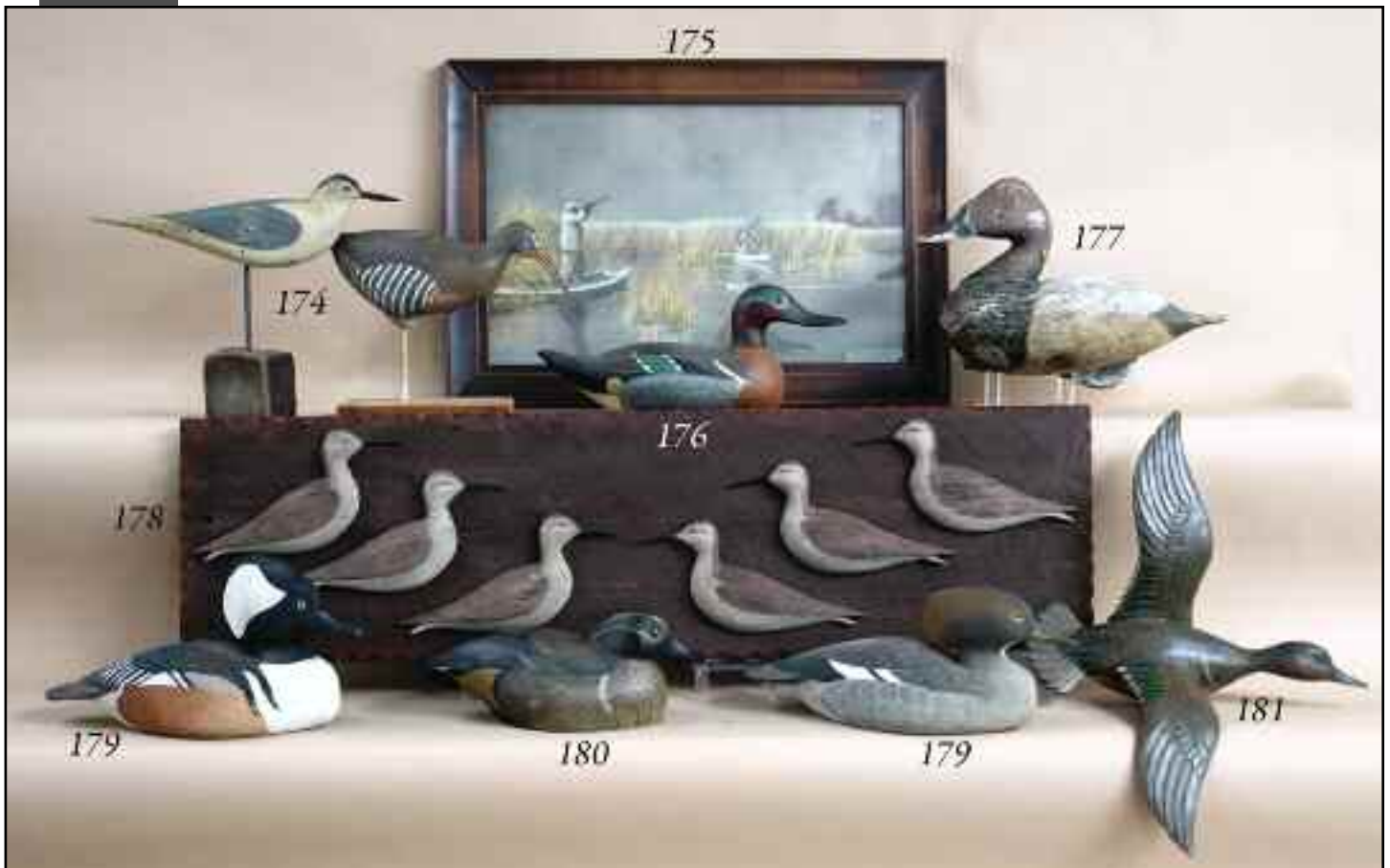
170 VERY EARLY SCOTER, possibly Maine, in very old working paint showing in-use wear. Good structural condition. Two-piece construction. Bottom weight removed. 100-200

171 EARLY SCOTER in very old working paint, probably Nova Scotia. Head appears to be newer. Good working paint. Structurally good condition. 100-200



172 VERY FINE CAST IRON CANVASBACK DRAKE WING DUCK Very early model in excellent structural condition. Very old working paint remaining. Fine example of an Upper Bay wing duck exhibiting good bill detail where bill meets face. 400-600

173 OVERSIZED WOODCOCK by Lloyd Tyler, Crisfield, MD. Very good original paint showing some sap bleed in areas. Structurally excellent with deep relief carved wings and carved feather wing tips. Raised rump feathers. Large glass eyes. Gesso thighs with wire life-like feet. Mounted atop a driftwood base. *Lloyd J. Tyler* written in pencil on bottom. *Crisfield, Md*, and *Crisfield* also written in pencil. 800-1200



174 AN UNUSUAL RAIL DECOY by Harry P. Megargee, Bozman, MD. Very good original paint and condition. Some shot scarring and minor rubs. Together with a **DECORATIVE TERN** in original paint with shot scarring. Structurally sound condition. Mounted on a wood base. 100-200

175 DRAWING depicting two hunters in a marsh setting shooting ducks. Composed of pastel, chalk and gouache on artist paper. Glazed in a period frame. Image size approximately 12" x 19". Together with a Winchester Western print depicting skunk hunting. 100-150

176 GREEN WING TEAL DRAKE by Don Allen. Mason reproduction in excellent original paint with with some minor spotting. Excellent structural condition. Signed and dated 1972. 100-200

177 REPLICA OF A LEM DUDLEY CANVASBACK DRAKE by Bob Seabrook. Weathered, antiqued condition with bottom weight. Good structural condition. *LD* in bottom. 200-300

178 SIX HALF-CARVED SHOREBIRDS, antiqued condition. Mounted on an old plaque. Together with a **GROUP OF PAPER MEMORABILIA** which includes a Weymouth clamming license, 1947. 100-150

179 PAIR OF HOODED MERGANSERS by Harry P. Megargee, Bozman, MD. Very good original paint showing some in-use wear. Structurally very good. Hollow construction. Inlet bottom weights. Hen branded *HPM*. 100-200

180 COMPETITION GREEN WING TEAL by T.J. Hooker. Excellent original paint and condition. Bottom keel removed. Maker's brand on bottom. Notation: *1st Place Chincoteague, VA, 1974*. 200-300

181 FINELY CARVED FLYING GREEN WING TEAL DRAKE Very good original paint and structurally very good condition with some minor separation at wing joints. Wings have fine carved feather detail. Broad carved fluted tail. Wing span approximately 18 1/2". 200-400



182 FINE GROUP OF THREE PEEPS by Hurley Conklin, Manahawkin, NJ. All in excellent original paint and condition with carved split tails. All formerly in the Joseph B. French "Hurley Conklin Peep Rig" and so stamped. 300-400

183 EARLY CURLEW by Hurley Conklin, Manahawkin, NJ. Excellent original paint and condition. Split-tail and original elongated bill. Branded *H.C* under the tail. Mounted on a wood base branded *H. CONKLIN*. 200-300

184 EARLY BRANT by Hurley Conklin, Manahawkin, NJ. Pre-brand, snakey head model in excellent original paint and unused condition. Hollow construction. Head turned slightly right. Hairline crack in lower neck. Some crazing to paint on back. 300-400

185 VERY FINE YELLOWLEG by Hurley Conklin, Manahawkin, NJ. Excellent original paint with relief-carved raised wings and yellow wire legs. Mounted on a custom base. Branded *H. CONKLIN*. Both base and shorebird retain Joe French stamp. 200-300

186 PAIR OF VERY EARLY BROADBILLS by Hurley Conklin, Manahawkin, NJ. Original paint with some working paint. Both structurally very good. Both with inlet bottom weights. Both branded *WGH* twice on bottoms. 200-300

187 PAIR OF VERY EARLY BROADBILLS by Hurley Conklin, Manahawkin, NJ. Original paint with some working paint. Both structurally very good. Both with inlet bottom weights. Both branded *WGH* twice on bottoms. 200-300

188 PAIR OF VERY EARLY BROADBILLS by Hurley Conklin, Manahawkin, NJ. Original paint with some working paint. Both structurally very good. Both with inlet bottom weights. Drake's head turned sharply right. Both branded *WGD* twice on bottoms. True Conklin gunning decoys. 200-300



189 EARLY BLUE BILL DRAKE by Irvin Fulcher, Stacy, NC. Good original paint showing in-use wear. Structurally good condition with typical bottom check. Retains bottom strip weight. *IF* carved in bottom. This rare decoy descended directly in the Fulcher family to the present consignor. 300-500

190 TWELVE EARLY DECOY HEADS by the masters of the Susquehanna school of carving. Unfinished dry condition and excellent structural condition. In storage until recently discovered by the consignor. 200-300

191 RARE RED HEAD DRAKE by Irvin Fulcher, Stacy, NC. Good original paint and unused condition. Structurally good condition with typical checks to bottom. Some sap bleed to breast and rear. This decoy descended directly in the Fulcher family to the present consignor. 300-500

192 MALLARD DRAKE, possibly a factory decoy, in original paint preserved by a coat of varnish. 50-75

193 BLUEBILL DRAKE, possibly Ontario. Old working paint and good condition. Hollow carved. Retains ring weight. 100-150

194 GROUP OF EIGHT PEEPS branded H. Monk. All with relief-carved wings and split tails. All with in-use wear. Original paint. Together with a wooden scoop in good condition. 100-200

195 CANADA GOOSE attributed to Capt. Lou (Lew) Inman, Beach Haven, NJ, circa 1875. Paint removed from most of the body with some head paint remaining. Good structural condition with a repair where the head meets the neck. Numerous plugs to shot holes. Two-piece dowed construction. Hollow construction. Branded on bottom. 150-250

196 RARE OLD SQUAW by Gene Hendrickson, Lower Bank, NJ. Excellent original paint showing some scuffs marks. Structurally sound condition. Hollow construction with inlet bottom weight. Branded *JEH* on bottom. 200-300

197 EARLY BRANT by Gene Hendrickson, Lower Bank, NJ, 1971. Excellent original paint and unused condition. Hollow construction. Inlet bottom weight. Branded *JEH* on bottom. 200-300

198 EARLY PINTAIL DRAKE by Gene Hendrickson, Lower Bank, NJ. Excellent original paint with minor scuffs. Hollow carved with inlet bottom weight. Branded *JEH*. 200-300

199 EARLY BLUE BILL HEN by Gene Hendrickson, Lower Bank, NJ. Original paint showing in-use wear. Hollow construction. Structurally sound. Inlet bottom weight. 100-200

200 LARGE GRAY BACK GULL by Charles "Pete" Wilber, Island Heights, NJ. Very good original paint showing some minor wear. Hollow construction. Good structural condition. Raised, split wing tips. Signed and branded *CW* on bottom. Probably used as a confidence decoy. 100-200

201 DECORATIVE WOOD DUCK DRAKE by Harry P. Megargee, Bozman, MD. Near-mint original paint and condition. Raised crossed wing tips and fluted tail. Hollow construction. Snug-head position. Branded *HPM* twice and dated 1978. 100-200

202 PAIR OF GREEN WING TEAL by Harry P. Megargee, Jr., Bozman, MD. Very good original paint showing some in-use wear. Both hollow construction. The hen with old bill repair. Weights removed. Both branded *HPM* and bear notation: *Honorable Mention 1951 Decoy Show NY*. 200-300

203 GRAY-BACK GULL, New Jersey. Original paint with some in-use wear. Hollow carved. Bottom pad weight. Structurally good with crack at mid-neck. 100-200

204 PINTAIL DRAKE by Harry P. Megargee, Jr., Bozman, MD. Near-mint original paint and condition. Very fine painted feather detail. Hollow construction with raised crossed wing tips and elongated sprig tail. Nice bill detail with nostril cut through. Signed and dated 1976. Branded *HPM*. 200-300

205 GROUP OF FOUR BOOKS by Henry Fleckenstein, Jr. *Decoys of the Mid-Atlantic Region*, first edition, *American Factory Decoys*, first edition, *New Jersey Decoys*, first edition, and *SHOREBIRD DECOYS*. All in very good condition with dust jackets with some wear. 100-200

206 RARE EDITION OF WORKING DECOYS OF THE JERSEY COAST AND DELAWARE VALLEY by Kenneth Gossner, in excellent condition. Some tears to upper edges of dust jacket. 250-350

207 GROUP OF FIVE DECOY BOOKS. *Factory Decoys* by S. and J. Delph, *American Bird Decoys* by W. Mackey, *Decoys of the Atlantic Flyway* by Dr. G. Starr, *Decoys of the Mississippi Flyway* by A. Haid and *Decoys of Maritime Canada* by D. and G. Guyette. All in very good condition with dust covers. 100-200





208 PAIR OF RUDDY DUCKS by Harry P. Megargee, Jr. Bozman, MD. Near-mint original paint and condition. Hen with raised crossed carved wing tips. The drake with relief-carved wings. The drake signed and dated 1990. The hen branded HPM. 200-300

209 RUDDY DUCK HEN by Harry P. Megargee, Jr. Bozman, MD. Excellent original paint and structurally good condition. Small rub to right side. Hollow construction with relief carved wing tips and fluted tail. Removable competition keel. Accompanied by Honorable Mention ribbon from 1971 U.S. National Decoy Show. 100-200

210 FINE GOLDENEYE DRAKE attributed to C. Holmes, possibly Ontario. Retains much of its original paint with some possible touch-up to tail area. Deep relief-carved wings extending to carved wing tips. Also has a double-crested carved head. Retains bottom pad weight. Structurally excellent. 300-500

211 REDHEAD DRAKE by Harry P. Megargee, Jr., Bozman, MD. Very good original paint and structural condition. Hollow construction. Relief-carved wing tips and stipple paint. Inlet bottom weight. Branded HPM. Notation: *Nat'l. Decoy Show, Honorable Mention, Gunning Class, 1971*. With ribbon. 150-250

212 GOLDENEYE DRAKE by Harry P. Megargee, Jr., Bozman, MD. Very good original paint with some minor sap bleed on breast. Structurally excellent. Hollow construction with raised crossed wing tips and fluted tail. Signed and dated 1983. Branded HPM twice on bottom. 200-300

213 TWO DECOYS, POSSIBLY BLUE BILL HENS OR RING NECKS, probably the St. Claire Flats area, circa 1900. Very good original paint, with second coat of paint to bottom boards. Hollow construction. Deep ice groove and glass eyes. Fine decoys from talented early carver. One decoy with unique internal rolling weight. 200-400

214 TWO DECOYS, POSSIBLY BLUE BILL HENS OR RING NECKS, probably the St. Claire Flats area, circa 1900. Very good original paint, with second coat of paint to bottom boards. Hollow construction. Deep ice groove and glass eyes. Fine decoys from talented early carver. 200-400

215 TWO DECOYS, POSSIBLY BLUE BILL HENS OR RING NECKS, probably the St. Claire Flats area, circa 1900. Very good original paint, with second coat of paint to bottom boards. Hollow construction. Deep ice groove and glass eyes. Fine decoys from a talented early carver. One decoy with unique internal rolling weight. 200-400



216 PAIR OF REDHEADS by Ron Sabatini, Levittown, PA. Near-mint original paint and condition. Nice comb painting to drake. Both with painted feather detail. Hollow construction. Raised carved wing tips and fluted tails. Both retain bottom weights. Signed and dated '08. Both head heads nicely turned. 200-300

217 CANADA GOOSE by Ron Sabatini, Levittown, PA. Excellent original paint and condition. Carved in an alert swimming position. Detailed painted feather work. Deep relief wing separation. Carved raised wing tips and fluted tail. Head turned boldly left. Signed and dated '09. 200-300

218 PAIR OF BUFFLEHEADS by Ron Sabatini, Levittown, PA. Near-mint original paint and condition. Fine detailed paint feather work. Both with relief-carved wings, raised wing tips and fluted tails. Both heads slightly turned. Retain weights. Signed and dated '09. 200-300

219 PAIR OF GOLDENEYES by Ron Sabatini, Levittown, PA. Near-mint original paint and condition. Drake carved in a preening position. Both with relief-carved wings and fluted tails. Hollow construction. Both signed and dated '99. 200-300

220 BLACK DUCK SLEEPER by Ron Sabatini, Levittown, PA. Near-mint original paint and unused condition. Excellent painted feather detail. Relief wing separation with carved raised wing tips and cupped fluted tail. Retains bottom weight. Signed and dated '09. 200-300

221 SWIMMING BLACK DUCK by George Strunk, Glendora, NJ. Very good original paint and structurally excellent condition. Detailed painted feather work and carved raised wing tips. Retains bottom pad weight. Branded G. STRUNK. 300-400

222 PAIR OF GREEN WING TEAL by George Strunk, Glendora, NJ. Very good original paint showing very minor in-use wear. Both hollow carved. Good painted feather detail. Raised carved wing tips. Both retain bottom pad weights. Both branded G. STRUNK. 400-600



223 PAIR OF PINTAILS by George Strunk, Glendora, NJ. Very good original paint with the hen showing some minor in-use wear. Both with detailed painted feather work. Both with raised carved wing tips. Both heads slightly turned. Both retain pad weights. Drake branded G.*STRUNK*. 500-700

224 FINE PAIR OF WOOD DUCKS by George Strunk, Glendora, NJ. Excellent original paint and structurally sound condition. Both hollow carved with turned heads. Both with detailed painted feather work. Raised carved wing tips and cupped fluted tails. Both with bottom pad weights. Both branded G *STRUNK* on bottoms. 700-800

225 FINE PAIR OF MALLARDS by George Strunk, Glendora, NJ. Excellent original paint showing some very minor in-use wear. Structurally sound condition. Hollow construction. Raised carved wing tips and broad spread tails. Both retain bottom pad weights. Both with slightly turned heads. Both branded GS on bottom. 500-700

226 PAIR OF HOODED MERGANSERS by George Strunk, Glendora, NJ. Very good original paint showing some in-use wear. Structurally sound with inlet bottom weights. Branded G. *STRUNK* on bottoms. A true pair of gunning decoys. 400-600

227 CANADA GOOSE by George Strunk, Glendora, NJ. Carved in the Delaware River manner. Near-mint original paint and condition. Raised, relief carved crossed wing tips and broad cupped fluted tail. Hollow construction. Carved in a content position. Bottom weight stamped G *STRUNK* and also signed by maker. 1200 - 1500

228 FINE WOOD DUCK by George Strunk, Glendora, NJ. Excellent original paint and structurally fine condition. Carved in a swimming position. Fine painted feather detail. Raised carved wing tips and fluted tail. Hollow construction. Bottom pad weight. Branded GS. 400-500

229 PAIR OF WOOD DUCKS by Herb Miller, Beach Haven, NJ. Near-mint original paint and condition. Both hollow carved with relief-carved wings and raised carved wing tips. Upswept fluted tails. Both retain weights. Both signed and branded. 400-600





230 SMALL CARVED OWL by Forrest "Bud" Jennings, Shamong, NJ. Near-mint original paint and condition. Relief-carved wings with crossed carved tips. Glass eyes and leather ears. Branded *FHJ* on bottom. Head turned right. Mounted on a wood base. 75-125

231 SMALL CARVED OWL by Forrest "Bud" Jennings, Shamong, NJ. Near-mint original paint and condition. Relief-carved wings. Glass eyes and leather ears. Branded *FHJ* on bottom. Mounted on a wood base. 50-75

232 ONE-QUARTER SIZE SWAN by Forrest "Bud" Jennings, Shamong, NJ. Antiqued original paint and excellent structural condition. Deep relief-carved wings and crossed split-tail tips. Branded *FHJ* on bottom. 100-200

233 SMALL SNOWY OWL by Forrest "Bud" Jennings, Shamong, NJ. Near-mint original paint and condition. Head turned right. Relief-carved wings with crossed carved tips. Branded *FHJ*. Mounted on a wood base. 75-125

234 PAIR OF GREEN WING TEAL by J.J. Blinebury. Both in very good original paint with some very minor in-use wear. Both hollow carved. Both weighted, branded and signed by maker. 100-200

235 FINE PAIR OF RINGBILLS by Lou Reineri in near-mint original paint and condition. Fine carved and painted detailed feather work. Hollow carved with head turned slightly right. Signed on bottom. 200-300

236 RELIEF-CARVED INDIAN PROFILE, signed Sorochima. Overall height approximately 14". Together with a canoe paddle with Indian motif. Approximate length 21 1/2". 75-125

237 WHIMSICAL PATRIOTIC JIGGING STICK by Forrest "Bud" Jennings, Shamong, NJ. Carved in a leaping fish style, and painted in a stars and stripes motif. Fashioned as a jiggling stick. Branded *F. Jennings*. Together with a **CARVED FISH DECOY** in excellent original paint and condition. Fine detailed overall carving. Probably a calico bass. Signed, dated *Feb. 2001*, and branded. 100-150

238 FINE PAIR OF BLUE BILLS by Lou Reineri. Near-mint original paint and condition. Fine painted and carved feather work. Hollow carved with both heads slightly turned. Both signed on bottoms. 200-300

239 GROUP OF FIVE BOOKS. *Waterfowl* by Paul Johnsgard, *The Ducks Came Back* by Kip Farrington, *Bird Painter's Journal* by Philip Rickman, *Duck Shooting* by Eugene Connett and *Connecticut Decoys* by Henry C. Chitwood. 75-125

240 TWO DECOY BOOKS. The first is *Decoys of the Mississippi Flyway* by A. Haid and *Shorebird Decoys* by H. Fleckenstein, Jr. Both first editions in good condition with dust covers. 50-75

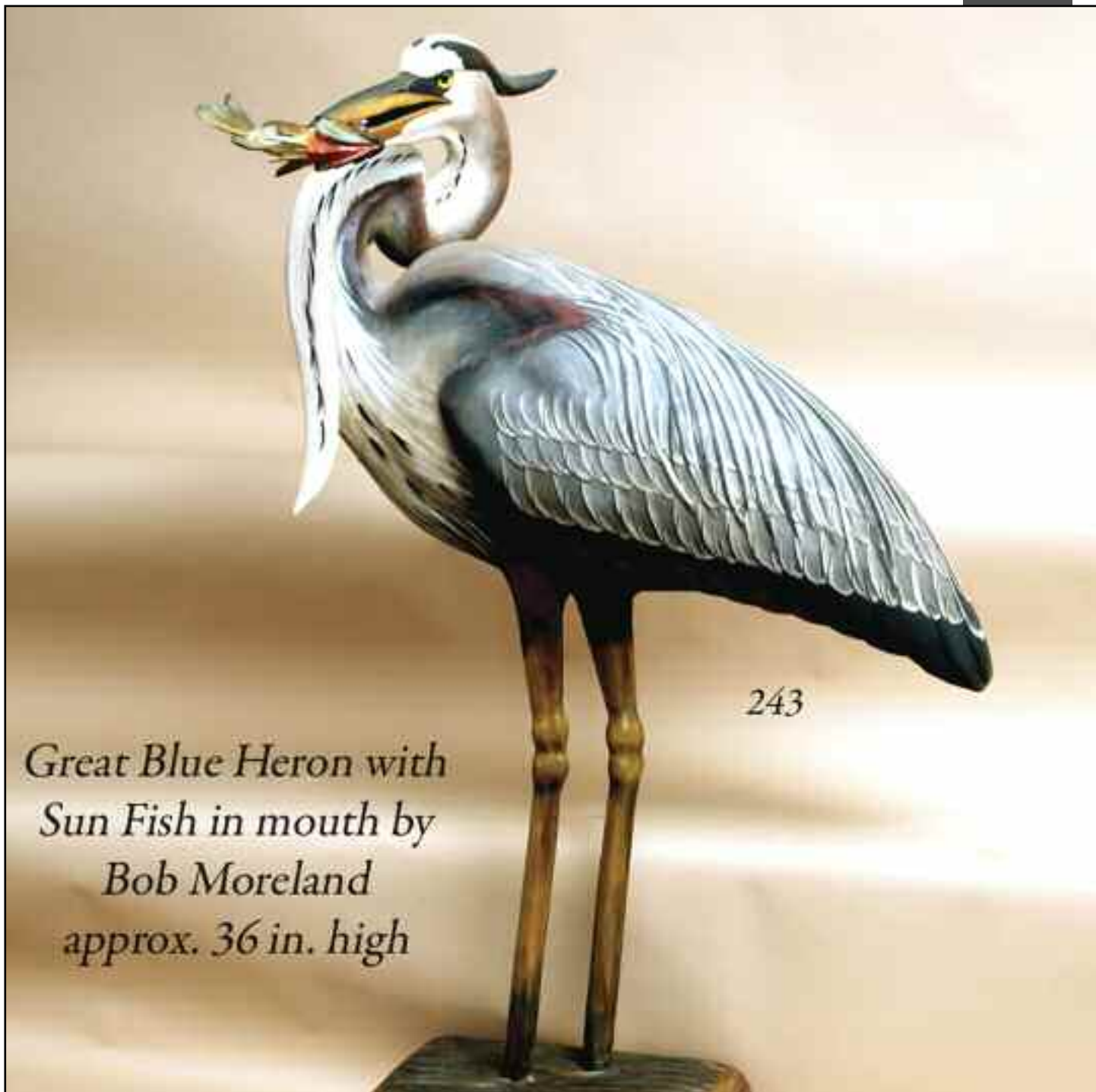
241 GROUP OF EIGHT DECOY BOOKS AND TWO SMALL FOLK ART PINTAILS. 200-300





242 **FULL-SIZE BLUE HERON** in excellent original paint and condition. Carved in a snakey-head fishing position. Deep relief-carved wings, carved ice groove and carved raised wing tips. Metal crest feathers. Mounted on a driftwood base. 300-500

243 GREAT BLUE HERON by Bob Moreland. Bold colorful carving with heron clutching a sunfish its bill. Excellent original paint and condition. Overall height approximately 36". Two carved legs fitted into base. 800-1200



*Great Blue Heron with
Sun Fish in mouth by
Bob Moreland
approx. 36 in. high*



244 PAIR OF BUFFLEHEADS by Harry P. Megargee, Jr., Bozman, MD. Excellent original paint and unused condition. Both hollow construction. Relief wing detail. Both with inlet weights. Both branded *HPM*. 200-300

245 SHOVELLER DRAKE by Harry P. Megargee, Jr. Bozman, MD. Excellent original paint and condition. Hollow construction with carved wing detail. Fine carving to bill. Retains inlet weight. Branded *HPM* twice. Notation on bottom: 2nd in Class US Nat'l. Decoy Show, Babylon, L.I., 1972. 100-200

246 COMPETITION BRANT by Harry P. Megargee, Bozman, MD. Excellent original paint and unused condition. Hollow construction. Fine painted feather detail. Carved in a snug-head position. Full bottom removable keel. Placed third in class at the U.S. National Decoy Show, Babylon, NY, and accompanied by winning ribbon. 200-300

247 SWIMMING BRANT, open-bill New Jersey model. Fine unpainted example with nice patina. Hollow carved with bottom pad weight. Classic example of a New Jersey brant. 100-200

248 BLACK DUCK by Harry P. Megargee, Jr., Bozman, MD. Very good original paint with some minor scuffs. Hollow construction with raised, crossed wing tips. Inlet bottom weight. Branded *HPM* twice. 100-200

249 SHOVELLER DRAKE by Ron Sabitini, Levittown, PA. Very good original paint and structurally good condition. Small flake of paint missing from the raised wing tip and small chip from underside of tail. Hollow construction. Signed. Together with a **GREEN WING TEAL HEN** by Bob Rutter, Sr., in excellent original paint and condition. Hollow construction. Branded. Also, a **COOT** by W. Oler in antiqued original paint and structurally good condition. 100-200

250 MALLARD DRAKE STICK-UP by William Geonne, King City, CA. Full-body stick up in good original paint and condition. Together with a **BLACK DUCK**. 100-150

251 WIDGEON DRAKE by Bob Seabrook, Absecon, NJ. Hollow early model in original paint and condition. Branded *SEABROOK*. Together with a **REDHEAD DRAKE** by Mike Smyser in original paint and condition. 100-200





252 PREENING SWAN by Dockiewicz in excellent original paint and condition. Head gracefully resting on back. Very fine wing tip carving. Detailed carved feather work to wing tips and fluted tail. Maker's name carved in bottom. 800-1200





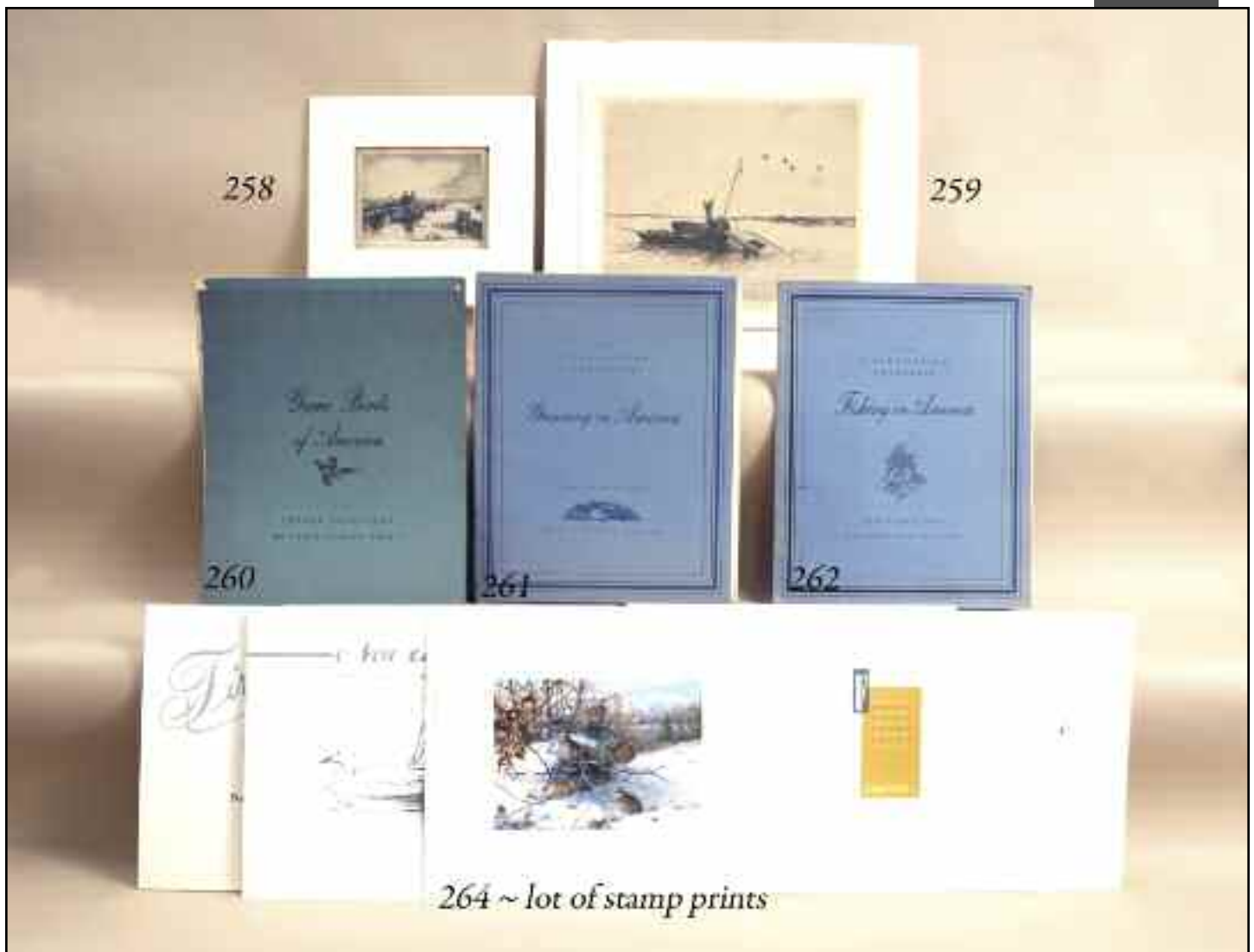
253 RARE PAIR OF OLD SQUAWS by Hurley Conklin, Manahawkin, NJ. Very good original paint and structurally sound condition. The drake with some minor sap bleed under tail. Both carved in a swimming position with heads slightly turned. Both with hollow construction. Carved wing tips. Both branded *H. CONKLIN* on bottoms. 800-1200

254 EARLY STICK-UP BRANT by Hurley Conklin, Manahawkin, NJ. Excellent original paint and unused condition. Hollow carved with a minor separation at upper neck. Hairline crack at mid-bill. Branded *H.C.* on bottom. 300-400

255 FINE PAIR OF RED HEADS by Hurley Conklin, Manahawkin, NJ. Near-mint original paint and condition. This exceptional pair of red heads has deep ice grooves and carved wing tips. Both hollow carved with turned heads. Both with inlet bottom weights. Both bear crisp *H. CONKLIN* brands. 800-1200

256 PAIR OF RED BREAST MERGANSERS by Hurley Conklin, Manahawkin, NJ. Near-mint original paint and condition. Both hollow construction with heads slightly turned. Both with very fine carved crest feathers. Both have carved wing tips and inset round weights. Both branded *H CONKLIN* on bottoms. 800-1200

257 RED-BREASTED MERGANSER DRAKE by Hurley Conklin, Manahawkin, NJ. Excellent original paint and condition. Hollow carved with a deep ice groove. Carved wing detail. Head turned slightly left. Branded *H. CONKLIN* on bottom. 200-300



258 FINE ETCHING (DRY POINT) by Roland Clark, titled *Chincoteague Marshes*. Excellent condition with three very small spots of foxing. Full margins. Image size is approximately 5" x 7". Signed LR with hand-written title notation in center margin. Personalized notation in lower border from the artist. 800-1200

259 VERY FINE ETCHING (DRY POINT) by Roland Clark, titled *Cap'n Billy's Rig* depicting two hunters and their layout rig. Especially fine condition, from the edition of 75. Signed LR, with caption in pencil below center. Margins very slightly trimmed. Image size is approximately 10 7/8" x 14 3/4". An exceptionally fine and rare work by this artist. 3500-4500

260 FIELD AND STREAM PORTFOLIO, GAME BIRDS OF AMERICA by Lynn Bogue Hunt, comprising a complete set of twelve prints. All in good condition with cover page. 100-200

261 FIELD AND STREAM PORTFOLIO, GUNNING IN AMERICA by A. Lassell Ripley, comprising six prints and two additional prints, plus cover page in folio. All in very good condition. 200-300

262 FIELD AND STREAM PORTFOLIO, FISHING IN AMERICA by Lynn Bogue Hunt, comprising six prints. All signed and dedicated: *To Ned Megargee - Lynn Bogue Hunt*. Together with cover page and booklet, *Fishing in America* by Lynn Bogue Hunt. All in good condition. 300-400

263 GROUP OF EIGHT PRINTS attributed to Lynn Bogue Hunt. All in good condition. 50-75 Not Shown

264 GROUP OF EIGHT STATE AND FEDERAL WILDLIFE STAMPS consisting of bobwhite quail by Maynard Reese, bobwhite quail by Owen Gromme, bobwhite quail by David Maass, 1988 New Jersey print by Rob Leslie, 1986-87 Federal Duck Stamp print by Burton E. Moore, 1984 New Jersey Waterfowl stamp by Tom Hirata, 1988-89 Federal Duck Stamp print by Daniel Smith and 1989 New Jersey Waterfowl stamp by Daniel Smith. All accompanied by respective stamps. 100-200



265 PRINT depicting redheads by Maynard Reese, with foxing and water damage. Unframed. 50-75 Not Shown

266 EARLY ORVIS GRAPHITE FLY ROD, 10' 4 4/8 oz., for 10 weight line. Complete with removable fighting butt. Together with original metal tube, lacking metal top. 50-75 Not Shown

267 ANTIQUE BAMBOO BOAT ROD with original wrapping and guides. Custom wrapped butt. Two-piece construction with ferrels intact. Double-sided agate guides on tip. Tip missing. Butt with one agate gathering guide. 20-30 Not Shown

268 EARLY BAMBOO FLY ROD by Hardy's of England. "JJH Triumph" model, "Palakona", No. 6. Tip section is approximately 1 1/4" shorter than butt section. 50-100

269 EARLY BAMBOO FLY ROD by the Orvis Company, Manchester, VT. "Madison" model, 8', 4 3/8 oz., Orvis impregnated. Hook keeper missing. Complete with metal tube, missing screw top. 50-100

270 HAND-COLORED LITHOGRAPH titled *Brook Trout Just Caught* published by Currier & Ives, New York, circa 1867-1872, depicting three plump brook trout in a rocky stream setting with foliage in background. Very good restored condition with full margins. Image size approximately 11" x 15 1/2". 600-700

271 FULL-SIZE TRUMPETER SWAN in original paint and condition. Applied wings and high extended neck. Retains horse shoe weight. 100-150

272 GROUP OF SIX TINNIES attributed to Strater & Sohler, Boston, MA. All in good original paint showing some in-use rusting. All with rare original placement sticks. 400-600

273 CANADA GOOSE, possibly Oneida Lake, NY, area. Original paint and unused condition. 100-150

274 RUDDY DUCK and a **HOODED MERGANSER**, by Jimmy Bowden, Assawoman, VA. Excellent unused condition. Branded. Together with a **ONE-QUARTER SIZE MALLARD** in antiqued condition. 100-200

275 TWO SHOREBIRDS, possibly New Jersey, circa 1900, in what appears to be weathered original paint. Both with replaced bills. Both mounted on wood bases. 100-200

276 HAND-COLORED LITHOGRAPH by Alexander Pope, Jr., depicting a pair of shorebirds in an aquatic setting. Professionally framed, matted and glazed. Bright image. Signed LR. Image size approximately 13" x 19". 300-400

277 EARLY YELLOWLEG in excellent original paint and condition. Retains original nail bill. Appears to be from New Jersey. Mounted on a wood base. 100-200

278 EARLY RUDDY TURNSTONE from the E.C. Cole rig, Cape May, NJ, circa 1880-90. Very old working paint with some shot scarring. Carved with original bill. Split tail. Branded E.C. COLE on side. 100-200

279 EARLY YELLOWLEG from the E.C. Cole rig, Cape May, NJ, circa 1880-90. Very old working paint and structurally good condition. Split-tail carving. Bill probably a replacement. Branded E.C. COLE twice. Together with an EARLY PLOVER, possibly New Jersey, with remnants of paint remaining. 100-200

280 EARLY BLACK BREAST PLOVER, circa 1880-90, from the Cole rig, Cape May, NJ. Very old working paint with some shot scarring. Branded E.C. COLE on side. Together with an early BLACK BREAST PLOVER from the E.C. Cole rig, Cape May, NJ. Very old working paint. Branded E.C. COLE twice. 100-200

281 TWO BLACK-BREAST PLOVERS, probably Virginia, circa 1890, in very old working paint, some of which is original. Both in very good structural condition. Both bills possibly original. Both with very minor shot scarring. 200-300





282 EARLY PLOVER in old working paint. Part of head missing and losses at placement hole and under tail. Together with a copy of a Long Island shorebird in worn paint. Both mounted on a wood base. 50-75
Not Shown

283 BROADBILL DRAKE by Lawrence C. McLaughlin, Edgely, PA. Excellent original paint and condition. Hollow construction. Carved in a low-head position. Possible paint touch up to bill. Fluted tail carving. Retains bottom weight and maker's brass tag. For nearly identical example, see *Floating Sculpture* by Huster and Knight, page 89. 400-600

284 OUTSTANDING PINTAIL DRAKE by John W. McLoughlin, Bordentown, NJ. Excellent original paint and structurally sound condition. Hollow construction with deep relief wing separation. Crossed, raised carved wing tips and broad carved fluted tail. Extended wood sprig tail tips. Head is turned slightly left. Signed twice on bottom in red ink. Bottom keel removed. 800-1200

285 OUTSTANDING BLACK DUCK by John McLoughlin, Bordentown, NJ. Near-mint original paint and unused condition. Relief-carved wings with elongated wing tips. Very fine detailed painted feather work on body with fine paint ticking to head. Nice early example of this maker's work. 500-700

286 EARLY WOOD DUCK DRAKE by Charles Cooper Burkley, Fieldsboro/Bordentown, NJ, circa 1940's. Excellent original paint and structurally sound condition. Raised carved inset wing tips. Head turned slightly left. Retains bottom weight. Maker's name, date and CB carved in bottom. 500-800

287 FINE CANVASBACK DRAKE by Jim West, Chesterfield, NJ. Gunning model in excellent original paint showing very minor wear. Structurally very good condition with fine hairline check at mid-neck. Hollow construction. Raised carved wing tips and fluted tail. Typical Delaware River weight. Bears John Hillman collection tag. 300-500

288 FINE BLUE BILL DRAKE by John "Jack" Wood, Hamilton, NJ. Near-mint original paint and condition. Detailed comb painting with raised wing tip detail. Retains bottom weight and maker's stamp. Accompanied by the First Place competition ribbon from the Toms River Art and Decoy Festival, 2011. 300-500

289 CANVASBACK DRAKE by Charles Seidel, circa 1981, in very good original paint showing minimal wear. Structurally sound condition. Hollow construction. Fluted carved tail and content head position. Retains bottom weight. Signed and dated. Branded SEIDEL. 200-300

290 BLACK DUCK by Edward "Mims" Corradetti, Bristol, PA. Excellent original paint and condition. Hollow construction. Long raised wing tip detail. Fine painted feather work. Full bottom keel with maker's stamp. 200-300

291 VERY EARLY BLACK DUCK by Tom Fitzpatrick, Delanco, NJ. Working paint attributed to Jess Heisler. Hollow, snug-head model with raised carved wing tips and cupped, fluted tail. Small loss of wood from bottom of bill and hairline crack in bill. Retains an iron keel weight. 200-300

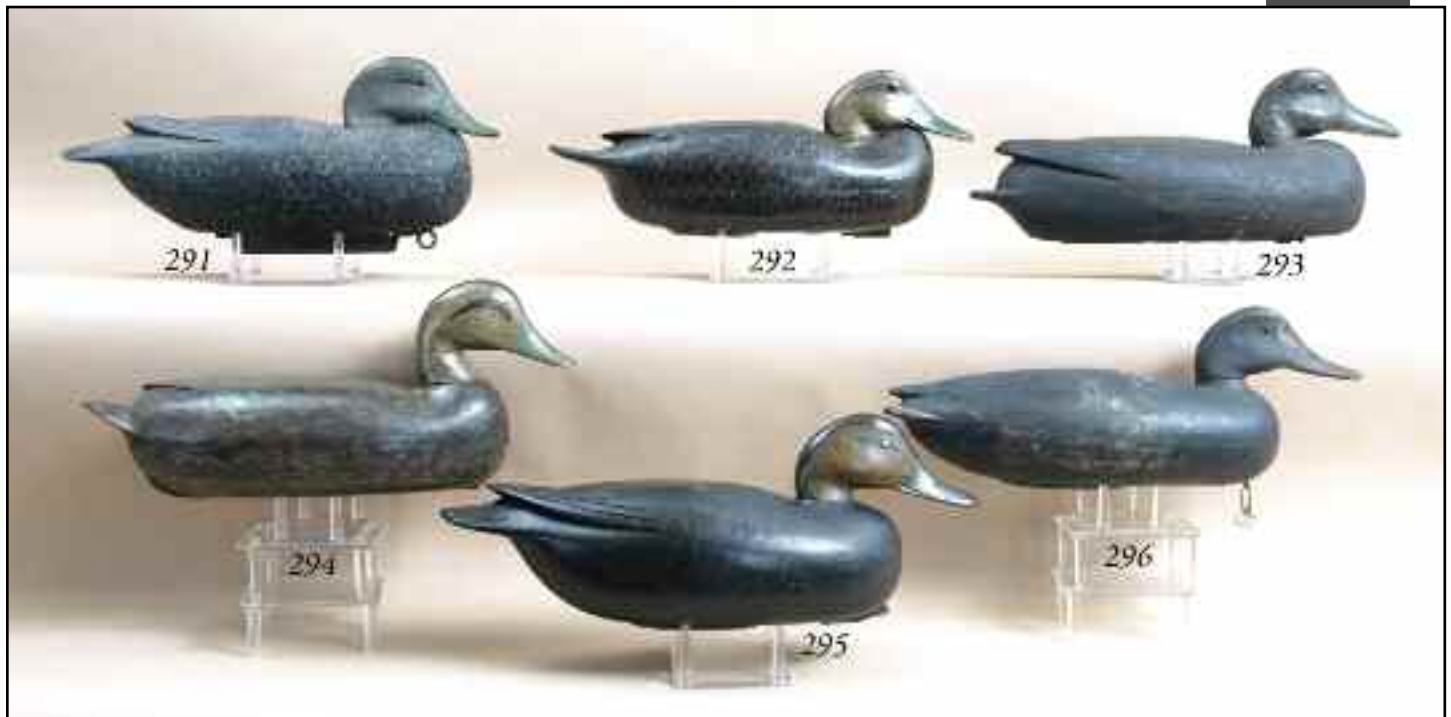
292 A FINE BLACK DUCK by Claude Trader, Florence, NJ. Appears to be original paint with painted feather work added by Mr. Trader's son. Structurally excellent condition with carved raised wings and carved fluted tail. Hollow construction, snug-head position. Retains weight and bears the Trader tag. Purchased directly from the Trader family. 800-1200

293 EARLY DELAWARE RIVER BLACK DUCK similar to the work of Joe West. Very old working paint, some of which appears to be original. Hollow construction. Raised carved wing tips. Carved in a content position. Retains bottom pad weights. One stamped *PETER ROBOY, BORDENTOWN, NJ*. 500-700

294 BLACK DUCK by Cooper Berkley, Fieldsboro, NJ. Appears to be very old working with some possibly the original. Overall feather detail and ticking to head. Hollow construction. Carved raised wing tips. Retains bottom pad weight. Good structural condition. Bottom check. 200-300

295 BLACK DUCK by Jess Heisler, Burlington, NJ. Body paint appears to be original with some paint restoration to the head. Excellent structural condition. Raised wings and fluted tail. Bottom weight intact. Retains rigging leather. 300-500

296 RARE CANVASBACK DRAKE by John English, Florence, NJ, (1852-1915). Appears to be some original paint with old working paint to areas. Very good structural condition with very fine hairline crack to left lower neck. Hollow carved with raised carved wing tips and fluted tail. Some chips to tail. Retains bottom weight. "S" punched in bottom. See *Floating Sculpture* by Huster and Knight, page 60 for similar examples. 600-800





297 PAIR OF PINTAILS by John Baker, Bristol, PA, circa 1960. Excellent original paint and unused condition. Both hollow carved. Both with raised wing detail. Both retain bottom keel weights with maker's name stamped on weight. Branded with signature. 400-600

298 RARE AND EARLY REDHEAD DRAKE by Thomas C. Gaskill, Toms River, NJ, (1879-1932). Old working paint and structurally sound condition. Hollow carved with a rare hollow carved head. Retains what appears to be the original weight stamped TCG. A rare New Jersey decoy. 600-800

299 BLUEBILL DRAKE attributed to Henry Kilpatrick, Barnegat, NJ. Very old working paint. Head possibly a very old replacement. Retains bottom pad weight. 75-100

300 BLACK DUCK by John Baker, Bristol, PA. Excellent original paint and unused condition. Hollow model with scratch feather paint on body. Fine ticking to head. Hollow carved in a low-head position. Carved raised wing tips and fluted tail. Retains bottom weight stamped with maker's information. Outstanding in all respects. 300-400

301 BLACK DUCK by John Baker, Bristol, PA. Excellent original paint and unused condition. Hollow model with scratch feather paint on body. Fine ticking to head. Hollow carved in a low-head position. Carved raised wing tips and fluted tail. Retains bottom weight stamped with maker's information. Outstanding in all respects. 300-400

302 TWO BLACK DUCKS, Delaware River. Both early balsa models in original paint with some possible touch up. Carved raised wings and inset hard wood tails. Retains bottom pad weights. 100-200

303 BLUEBILL HEN attributed to Harry M. Shourds, Ocean City, NJ. Restored condition. Hollow carved with typical inlet bottom weight. 200-300

304 BLACK DUCK, New Jersey, in good original paint. Carved in a preening position with carved detail. Hollow carved. Retains bottom pad weight. 100-200

305 EARLY BLACK DUCK, New Jersey, in weathered working paint and good structural condition. Repaired crack at mid-neck. Hollow construction. Inlet bottom weight. Together with an **EARLY BLACK DUCK**, New Jersey, in weathered working paint and good structural condition. Hollow construction with inlet bottom weight. 200-300

306 CANVASBACK DRAKE by Charles Black. Bordentown, NJ, (1882-1956). Appears to be some original paint with some very early touch up. Structurally very good. Hollow construction. Retains bottom pad weight. Appears to have brand removed. See *Floating Sculpture* by Huster and Knight, page 26, for rigmate. 300-500

307 EXTREMELY RARE RUDDY DUCK by John S. Kimble, Columbus, NJ. Retains original paint with some thin wash of overpaint to white sides, cheeks and small area on breast. This rare decoy is hollow carved with raised carved wing tips and fluted tail. Retains typical Delaware River pad weight. Excellent structural condition. A rigmate can be seen in *Floating Sculpture* by Huster and Knight, page 145, with additional Kimble decoys shown on page 151. See Guyette and Schmidt, November 2007 catalog, Lot 556. 2500-3500

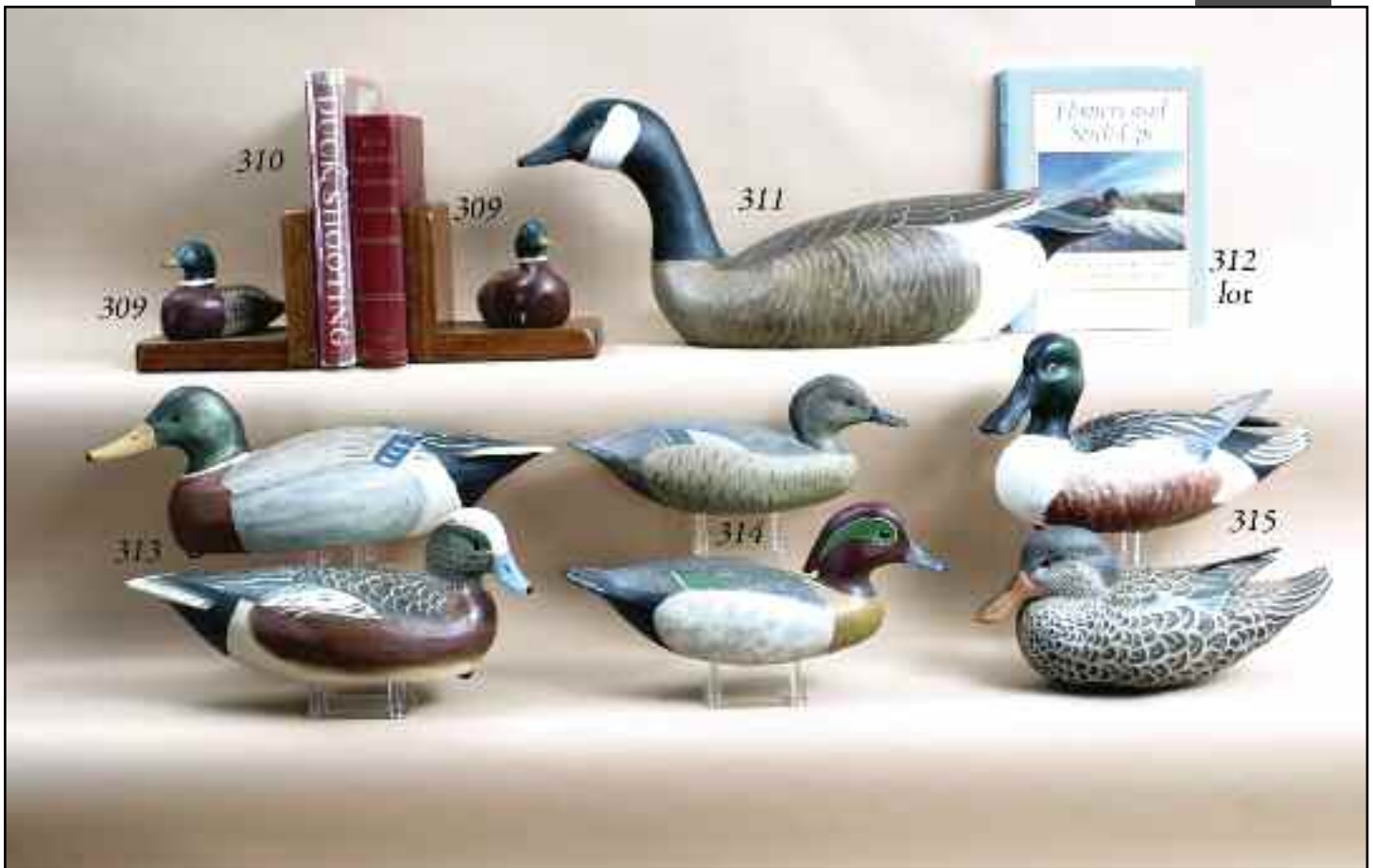


308 PAIR OF MINIATURE MALLARDS by Tom Fitzpatrick, Delanco, NJ. Very good original paint and condition. Some very minor flaking to the drake's speculum and head area. Raised carved wing detail and broad carved fluted tails. Both exhibit a fine patina. 500-700



308A EARLY BRANT by John McLoughlin, Bordentown, NJ. Mostly original paint with some possible touch-up to tail and breast area. Early hollow carving. Retains bottom egg-shaped weight. Faint signature remains with McLoughlin's ink stamp. 300-400





309 PAIR OF BOOKENDS with one-quarter size mallards. Very good original paint and condition. Similar to the work of Percy Gant. 75-125

310 TWO BOOKS consisting of *Duck Shooting* edited by Eugene Connert in excellent condition with dust jacket, and *Duck Shooting* by Heilner in good condition. 50-100

311 CANADA GOOSE by Jim Britton in excellent original paint and condition. Fine painted feather detail. Raised wing tips and carved fluted tail. Alert head position turned slightly left. 200-300

312 GROUP OF NINE DECOY BOOKS. 200-300

313 MALLARD DRAKE by Jimmy Bowden, Assawoman, VA. Excellent original paint and unused condition. Branded and dated 2008 on bottom. Together with a WIDGEON by Jimmy Bowden, in excellent original paint and condition. Signed and dated 2009. 100-200

314 PAIR OF GREEN WING TEAL by John Hamilton, Cedar Run, NJ. Excellent original paint and condition. Hollow construction. Bottom inlet weights. Drake branded *J. HAMILTON*, the hen stamped *JH* on bottom. 100-200

315 PAIR OF SHOVELLERS by Jack Wood, Trenton, NJ. Both in near-mint exceptional paint with detailed feather work. Both structurally sound. Deep relief carved wings and raised crossed wing tips. Cupped fluted tails. Hollow construction. Both retain triangular weight. Both signed by carver. 400-600

316 CLASSIC PAIR OF EIDERS by World Championship carver Keith Mueller, South Windsor, CT. Excellent original paint and structurally superb condition. The hen with detailed paint feather work and fine bill carving. The drake with fine paint shading. Carved open bill grasping a carved mussel. Both hollow carved with ice grooves. Both with heads slightly turned. Both branded MUELLER with signature and hand-written notation: *First Stratford Eider*. Both dated 7/9/85. Classic Keith Mueller carvings. 2500-3500





317 BLACK DUCK by Nathan Rowley Horner, West Creek, NJ. Very good early paint by Chris Sprague. Structurally excellent condition. Hollow carved with deep ice groove, chamfered bill edges. Retains bottom pad weight. Branded CTS. 4000-5000

318 RED-BREASTED MERGANSER DRAKE by Chris Sprague, Beach Haven, NJ. Very good original paint showing some shelf marks and crazing. Structurally very good condition. Hollow construction. Head turned slightly left. Carved head crest and fluted tail. *Chris Sprague, Beach Haven, NJ*, noted on bottom with additional illegible notation. 200-300

319 EARLY BLACK DUCK attributed to Nathan Rowley Horner, West Creek, NJ. Appears to be original paint with some possible touch up. Excellent structural condition with small chip from right side of tail. 2000-3000

320 EARLY GREEN WING TEAL DRAKE by George Strunk, Glendora, NJ. Very good original paint showing some in-use wear. Structurally sound with inlet bottom weight. Branded G. STRUNK on bottom. Early example with fine detailed comb painting. 200-300

321 EARLY WIDGEON DRAKE, possibly by the Birdsall family, with excellent working paint attributed to Lloyd Johnson, Bay Head, NJ. Hollow carved, structurally sound. 300-400

322 RED-BREASTED MERGANSER DRAKE carved in the manner of Nathan Rowley Horner. Excellent paint with minor rubs. Hollow carved with bottom pad weight stamped HDF. 400-600

323 VERY EARLY RED-BREASTED MERGANSER with paint removed. Preserved by a coat of varnish. Structurally good condition with numerous shot scars. Hollow construction. Bottom weight. 300-400

324 RARE BRANT by Lloyd Johnson, Bay Head, NJ. Appears to be good original paint with some minor in-use wear. Hollow construction. Retains bottom keel weight. 800-1000



325 EARLY CANADA GOOSE by Jesse Birdsall, Barnegat, NJ. Very old working paint showing paint loss exposing wood in areas. Hollow carved, in good structural condition with typical mid-neck check.

Accompanying this lot is a photograph of Bernie Penn, Waretown, (Barnegat, NJ), holding this decoy. This decoy was originally purchased from King Hemming by Bruce Winterbottom. Then to John Cavalier, to Art Birdsall to the current owner in 2001. Photograph taken by King Hemming. 2000-3000

326 EARLY CANADA GOOSE from Barnegat Bay, retaining some original paint with some very old touchup. Full-body, hollow carved example in structurally good condition. Retains bottom pad weight. 200-300

327 TWO WORKING BRANT. The first is by Rhodes Truex, Atlantic City, NJ. Very old working paint and structurally sound condition. Hollow construction. Inlet bottom weight. Together with a brant by H.V. Shourds, Tuckerton, NJ. Old working paint and structurally sound condition. Hollow carved with inlet bottom weight. 200-400

328 BRANT by H.V. Shourds, Tuckerton, NJ. Old working paint and good structural condition. Sliver of wood missing from underside of bill and hairline crack in lower neck. Hollow construction. Inlet bottom weight. Together with a **BRANT** by Harry V. Shourds, Tuckerton, NJ. Very old working paint and good structural condition. Small sliver of wood missing from underside of bill. Hollow construction. Inlet bottom weight. Classic New Jersey brant. 200-300

329 EARLY BRANT, New Jersey, attributed to Otto Wrenger, Tuckerton, NJ. Very old working paint with some paint loss to underside. Structurally good with repair to bill weight removed. Together with a very stylized **NEW JERSEY BRANT**, possibly Tuckerton, in old working paint. Structurally good condition. Sliver of wood missing from underside of bill. Hollow construction. Bottom weight missing. 100-200

330 VERY EARLY BRANT by a member of the Dorsett family, Lovelandtown, NJ. Very old working paint and structurally good condition. Typical mid-necks checks. Hollow construction with the weight removed. Retains WFO brand (Osborne family). Some traces of original paint are visible. 800-1200

331 BRANT by Eugene "Dipper" Ortley, Pt. Pleasant, NJ. Good original paint showing some in-use wear. Some paint loss to bottom and seams. Hollow construction. Retains bottom weight. 300-400

332 OUTSTANDING GREATER YELLOWLEG by Taylor Johnson, Pt. Pleasant, NJ. Excellent original paint and very good structural condition. Very old crack in lower neck. Retains original bill and carrying screw eye in tail. Paint exhibits feather detail to breast. *Mackey Collection* stamped twice on bottom. Also retains the McCleery Collection stamp on bottom. This shorebird was Lot 361 in the historic James McCleery sale at Sotheby's and is photographed in *Call to the Sky* by Robert Shaw, pages 54- 55. 16000 - 18000





333 EARLY GREEN WING TEAL DRAKE PREENER by Lloyd Johnson, Bay Head, NJ. Excellent original paint and structurally sound condition. Detailed painted feather work overall with comb painting to sides. Unused condition and possibly a presentation decoy as it retains a brass tag engraved *L. Johnson, Bay Head, N.J.* with notation *GREEN WING TEAL 1955*. 1200 -1500

334 STYLISH BLUEBILL DRAKE by Willis Johnson, Pt. Pleasant, NJ, circa 1940. Near-mint original paint and structurally very good condition. Hairline check at mid-neck. Some minor rubs to bill and tail edges. Fine hollow carved example of the Barnegat Bay makers' style. Retains bottom pad weight and rigging leather. 1000-1200





335 RED-BREAST MERGANSER DRAKE by Lou Barkalow, Forked River, NJ. Retains weathered original paint showing touch up to white areas and head. Hollow carved with pad weight on bottom. LB stamped on bottom twice. EB stamped on bottom. 400-600

336 RED-BREAST MERGANSER HEN by Lou Barkalow, Forked River, NJ. Very old working paint and good structural condition. Checks to neck area. Retains bottom weights with LB stamped into one weight. 400-600

337 OVERSIZED MALLARD DRAKE by the Wildfowler Decoy Company, Pt. Pleasant, NJ. Excellent original paint and in what appears to be unused condition. Chip to underside of bill tip. Full bottom keel. Crisp brand. 100-200

338 BROADBILL DRAKE attributed to Joe King, Waretown, NJ. Restored paint and condition. Hollow construction. Inlet bottom weight. Deep ice groove. Together with a **BLUEBILL DRAKE** attributed to John McAnney, New Gretna, NJ. Restored paint and condition. Hollow construction. Bottom pad weight. 100-200

339 BLUEBILL DRAKE by H.V. Shourds, Tuckerton, NJ. Early working paint and good structural condition with repair at mid-neck. Retains inlet bottom weight. Branded G.R.N. on bottom. Together with a **BLUEBILL** by Harry V. Shourds, Tuckerton, NJ. Traces of paint remaining. Fair structural condition. Hollow construction. Tail chips. Branded G.R.N. on bottom. 200-300

340 BRANT by Lester "Dipper" Ortley, Lovelandtown, NJ, circa 1950. Very good original paint. Structurally sound condition. Hollow construction. Keel removed. Classic New Jersey example. 200-300

341 CLASSIC PAIR OF BLUE BILLS by Eugene "Dipper" Ortley, Pt. Pleasant, NJ. Both in very good original paint with some minor in-use wear. Hollow construction. Both retain bottom weights. Both formerly in the John Hillman gunning rig. The drake branded JAH and retains Hillman staple. 300-500





342 BRANT by Ellis Parker, Beach Haven, NJ. Very old working paint, some of which appears to be original. Structurally good condition. Hollow carved. Retains bottom weight. 200-300

343 SWIMMING BRANT attributed to Burrel Adams, Ship Bottom, NJ. Restored condition. Relief-carved wings. Hollow carved. Inlet bottom weight. Open check the length of bottom. 100-200

344 EARLY BRANT attributed to Sam Soper, Barnegat, NJ, circa 1900. Traces of paint remaining. Structurally good condition with some shot scarring. Retains bottom inlet weight. Hollow carved with dowelled construction. 300-500

345 EARLY BRANT, New Jersey, attributed to J.G Downs, Tuckerton, NJ. Appears to be good original paint with very minor wear. Hollow carved with deep ice groove and inlet bottom weight. Stamped *J G DOWNS* in weight. Classic New Jersey decoy. 300-500

346 BLACK DUCK by H.M. Shourds, Ocean City, NJ. Old working paint and structurally good condition. Some minor loss to tail. Hollow carved with tack eyes. Inlet bottom weight. Branded *E.S. CLOUTING* and *HM* under bill. 300-400

347 EARLY BLACK DUCK by Frank Lamsom, Mayetta, NJ, circa 1910. Old working paint and fair structural condition. Open check at mid-neck. Retains bottom weight. Hollow carved. 100-200

348 BLACK DUCK by Calvin Hickman, Port Republic, NJ. Very weathered working paint. Structurally very good. Hollow construction. Some minor puppy chew to bill and small chip to underside. 100-150

349 UNUSUAL SWIMMING BRANT by Dave Rhodes, Absecon, NJ. Original paint showing some in-use wear. Cast-iron head and large keel weight branded *D. RHODES*. Also branded on bottom and signed on tail. 200-300

350 BLACK DUCK attributed to Jess Birdsall, Barnegat, NJ. Very old working paint worn to wood in areas. Structurally good with some separation to body seam. Hollow construction. Retains bottom pad weight. 100-200

351 EARLY BLACK DUCK by H.V. Shourds, Tuckerton, NJ. Restored paint and good structural condition. Hollow carved with inlet bottom weight. Minor chip to tail. A fine early New Jersey decoy. 300-400

352 BLACK DUCK, Barnegat Bay, NJ. Old working paint and structurally good condition. Retains inlet circular bottom weight. 100-200

353 BLACK DUCK attributed to Rhodes Truex, Atlantic City, NJ. Very old flocked working paint. Structurally fair condition. Hollow carved. Inlet bottom weight. 200-300

354 BLACK DUCK by Joe Tom Cranmer, Manahawkin, NJ. Appears to be original paint on body and working paint to bottom. Scratch feather paint on body. Head appears to have some touch up. Together with a **BLACK DUCK** by Gene Hendrickson in old working paint and structurally good condition. Branded *EH*. 100-200

355 RARE DOVE TINNY by James J. Jenkins, Stamford, CT. Excellent original paint and condition. Original placement stick. Some shot scarring. Together with a **YELLOWLEG TINNY** in good original paint and condition. Original placement stick. 100-200

356 PAIR OF BLUEBILLS attributed to Joe King, West Creek, NJ, circa 1875-90. Both in restored condition. Both hollow carved. Bottom pad weights. Good structural condition. 300-400

357 BLUEBILL DRAKE by Jesse Birdsall, Barnegat, NJ. Very old working paint. Structurally good condition. Dowelled construction. Retains bottom weights and branded *PPGC*. 300-400

358 BROADBILL DRAKE by Eugene Birdsall, Pt. Pleasant, NJ. Very old working paint and good structural condition. Hollow construction. Circa 1890's. Retains bottom pad weight. Branded *JRT* on bottom. 700-800

359 EARLY LESSER YELLOWLEG attributed to Nathan Rowley Horner, West Creek, NJ. Excellent original paint and condition. Original bill remains intact. Retains small staple in rear of placement hole similar to those used by John Hillman. 800-1200

360 VERY EARLY BLACK DUCK attributed to Nathan Rowley Horner, West Creek, NJ. Very old weathered working paint with some traces of original possible. Very good structural condition with some shot scarring to right side. Hollow construction. Retains bottom pad weight. 800-1200

361 VERY EARLY BLACK DUCK, Barnegat Bay, NJ. Very old working paint and sound structural condition. Hollow construction. Retains bottom weight. Together with an **EARLY BLACK DUCK** in old working paint. Sound structural condition. Retains bottom weight. 200-300



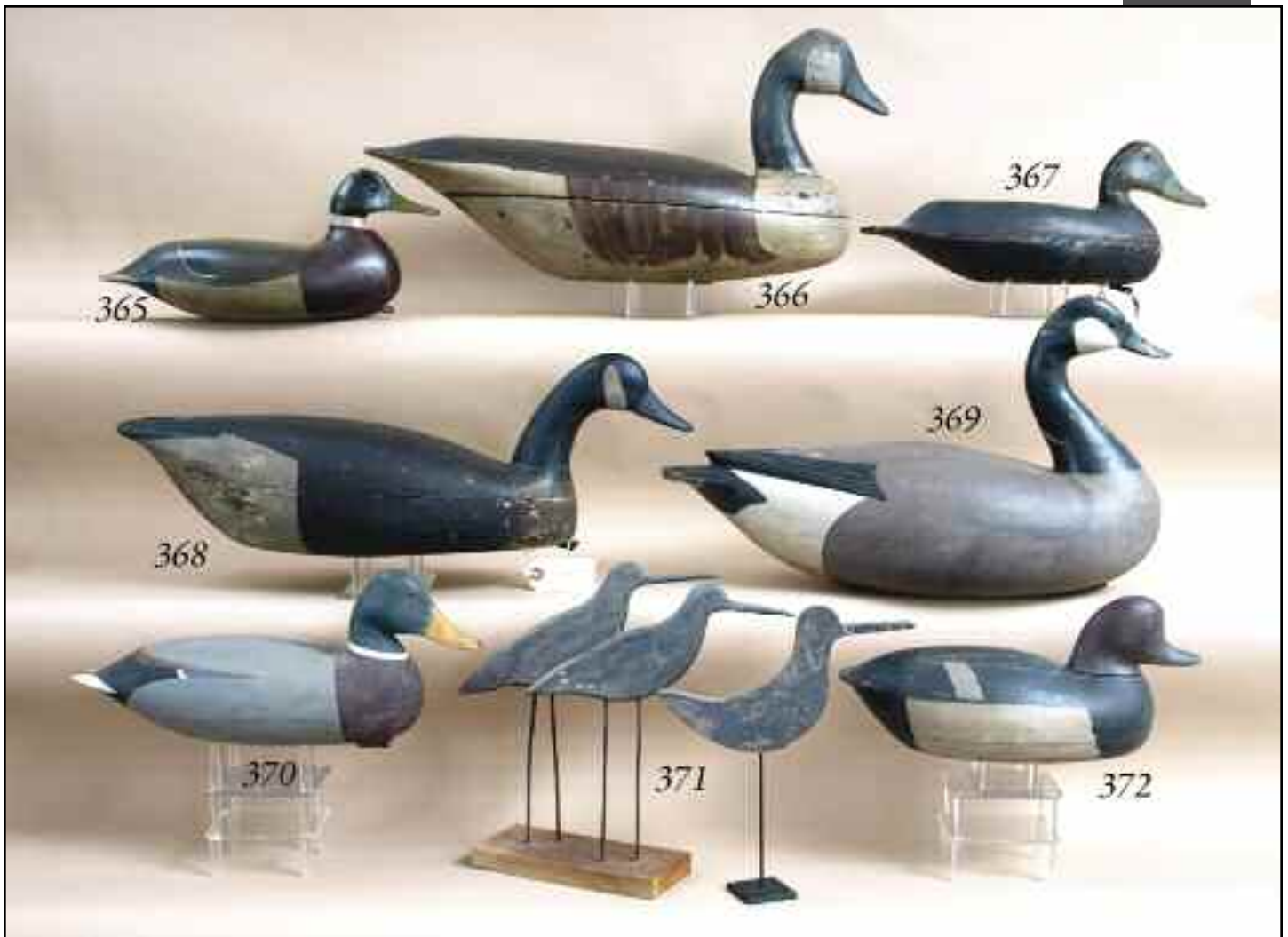
Provenance: The following shorebirds descended from the Charles Turner family to the family of the current consignor.

362 BLACK-BREASTED PLOVER from the Charles Turner rig, Atlantic City, NJ, circa 1880-90. Excellent original paint exhibiting overall swirl feather paint on back and sides. Retains original inset bill pinned through the back of the head. This shorebird is a classic example of New Jersey craftsmanship at its best. It is commonly believed that Charles Turner was the buoy light tender for the Atlantic City area. An almost identical example was sold in the Frank and Frank October 26, 2008 sale, Lot 364. 3000-4000

363 RARE CURLEW from the Charles Turner rig, Atlantic City, NJ, circa 1880-90. Excellent original condition with bill retaining original paint. Structurally excellent condition with fine hairline crack in breast. The Turner curlews were carved from sugar pine and were not painted, since the wood naturally oxidized to the appearance and coloring of a New Jersey curlew. A classic New Jersey decoy. It is commonly believed that Charles Turner was the buoy light tender for the Atlantic City area. 3000-4000

364 FINE YELLOWLEG SHOREBIRD from the famous Charles Turner rig, Atlantic City, NJ, circa 1880-90. Outstanding original paint and structurally excellent condition. Outlined painted wing detail with feather work. Back exhibits painted bar pattern feather detailing. Breast with fine detailed feather pattern. Retains original inset bill that is pinned from the back of the head. Classic and rare New Jersey shorebird. An almost identical example was sold in the Frank and Frank October 26, 2008 sale, Lot 365. It is commonly believed that Charles Turner was the buoy light tender for the Atlantic City area. 5000-7000





365 MALLARD DRAKE attributed to Bill Corson, Corson's Inlet, Beasleys Point, NJ, circa 1930. Restored condition. Some roughness to right tail edge. Hollow carved. Inlet bottom weight. Check the length of bottom. 200-300

366 CANADA GOOSE attributed to Joe King, Manahawkin, NJ. Restored condition. Hollow carved. Retains brand of the Old Dominion Gunning and Angling Association, circa 1870. Good structural condition. Some separation at body seam. 300-400

367 BLACK DUCK by Gene Hendrickson, Lower Bank, NJ. Retains mostly original paint with some areas of touch-up to head. Hollow carved. Repair to open check on bottom. 200-300

368 CANADA GOOSE by Burrell Adams, Ship Bottom, NJ. Very old original paint with some possible working touch up. Structurally good with in-use wear. Hollow carved. Relief-carved wing detail. Pad weight removed. Inlet bottom weight intact. 300-400

369 CANADA GOOSE carved in the manner of the Delaware River carvers. Very good original paint with some in-use wear. Hollow carved. Raised carved wing tips and broad fluted tail. Retains bottom pad weight. 200-300

370 EARLY MALLARD DRAKE, Barnegat Bay, in restored condition. Hollow construction with inlet bottom weight. A fine decoy carved in the manner of the talented New Jersey carvers. 100-200

371 GROUP OF THREE FLATTIES consisting of two flatties, possibly plovers in strong original paint and very good structural condition. One with small chip to underside of bill. Both on wire legs atop a wood base. Together with another flatty in weathered original paint. 100-150

372 REDHEAD DRAKE by Tom Gaskill, Toms River, NJ. Restored condition. Hollow carved. Retains bottom weight. Branded. Stamped TCG. See *New Jersey Decoys* by H. Fleckenstein, page 18, for additional information about this carver. 200-300



373 BROADBILL DRAKE attributed to Jesse Birdsall, Barnegat, NJ. Very old working paint. Structurally good condition. Bottom pad weight. 350-450

374 PAIR OF MINIATURE BLACK DUCKS by Harry P. Megargee, Bozman, MD. Excellent original paint and condition. One is carved in a sleeping position. Both signed with initials on bottom. 75-125

375 RARE GOLDENEYE DRAKE by Samuel Smith, Tuckerton, NJ, (1865-1923). Very old working paint and structurally sound condition. Hollow carved with inlet bottom weight. See *New Jersey Decoys* by H. Fleckenstein. From the Judge Cooper collection. 600-800

376 BLUE BILL DRAKE by Joe Tom Cranmer, Manahawkin, NJ. Very worn paint that may be original. Structurally good condition. Wood sliver missing from back. Checks to head and bill. Puppy chew to bill tip. Bottom weight removed. 100-200

377 REDHEAD DRAKE by John Updike, Green Bank, NJ, circa 1930. Excellent restored paint and condition. Hollow construction. Inlet bottom weight. Branded *SEIDEL* on bottom. 200-300

378 BLUE BILL DRAKE by Nate Fraser, Tuckerton, NJ. Very old working paint and structurally sound condition. Hollow carved. Somers Headley SGH stamp on bottom three times. Nate Fraser was Harry V. Shourds' barber. 200-300

379 MALLARD DRAKE by the Wildfowler Decoy Company, Old Saybrook, CT. Very good original paint showing some in-use wear and some staining. Good structural condition. Balsa construction. 200-300

380 TWO NEW JERSEY BLACK DUCKS. The first possibly Cape May, in old working paint and structurally good condition. Old repair to neck base. Hollow with dowelled construction. Bottom weight removed. Also, a **BLACK DUCK** similar in style to H.V. Shourds, Tuckerton, NJ. Old working paint. Inlet bottom weight. 200-300

381 BROADBILL DRAKE by Cleve Dabler, Cape May, NJ. Very old working paint and structurally good condition. Inlet bottom weight. Hollow construction. 100-200

382 EARLY BLACK DUCK, New Jersey, attributed to Ellis Parker, Beach Haven, NJ. Very weathered working paint. Good structural condition. Hollow construction. Bottom weight. Together with a **BLACK DUCK**, Barnegat Bay. Hollow construction. Old working paint. Structurally sound. Inlet bottom weight. Old John Hillman staple. 100-200



383 SMALL WOVEN HAMPER BASKET with metal hinges and clasp. Bentwood handles. Overall good condition. Approximately 9" x 6". From the Pauline and Bob white collection. 75-125

384 FOLIO OF GAME BIRDS OF AMERICA BY Lynn Bogue Hunt. Also, a **GROUP OF PRINTS** consisting of five whimsical prints of children's poems, Delaware River shooting scene etching, with foxing, *Ladies Home Journal*, 1922, *Life Magazine*, 1968, *Life Magazine* 1967, 3D Movie Magazine, 1953 and assorted printed material. Also, Shang Wheeler decoy print by Milton Weiler, No.33, artist's proof by Jim Heitsman depicting pheasants, and two decoy prints from the collection of Wm. J. Mackey by Mary Schanck. 100-200

385 FINELY WOVEN CYLINDRICAL BASKET with very tight weave with woven pattern on upper portion. Overall height approximately 12 1/2". From the Pauline and Bob White collection. 75-100

386 NICELY WOVEN BASKET with bentwood handle. Probably early 1900's. Good condition with some loss. Overall height approximately 15". From the Pauline and Bob White collection. 75-100

387 WOVEN GATHERING BASKET with bentwood handle. Good condition with break in rim. Overall height approximately 16". From the Pauline and Bob White collection. 75-100

388 OPEN CARRYING BASKET with unusual bentwood swivel hinges. Nice tight weave in good condition. Rose highlights. Overall height with handle upright is approximately 16 1/2". From the Pauline and Bob White collection. 75-100

389 EARLY WOVEN CLAM BASKET with unusual metal reinforcement straps. Retains original rope handles secured by bent wire fasteners. Good condition with some minor losses to bottom. Overall height approximately 14". From the Pauline and Bob White collection. 75-100



390 BRANT by John Hamilton, Cedar Run, NJ. Excellent original paint and structurally sound condition. Hollow construction. Carved in a snakey-head position. *JH* stamped in bottom. Bears the John Hillman collection tag. 200-300

391 OLD SQUAW DRAKE by Ken Kirby in original antiqued paint and unused condition. Hollow construction. Structurally sound. Signed on bottom. 100-200

392 BRANT by John Hamilton, Cedar Run, NJ. Excellent original paint and condition. Hollow carved with inlet bottom weight. Stamped *JH* on bottom. Retains John Hillman collection tag. 200-300

393 HOOLDED MERGANSER DRAKE by John Hamilton, Cedar Run, NJ. Excellent original paint and structurally sound condition. Hollow carved. Inlet bottom weight branded *J.HAMILTON*. Bears John Hillman collection tag. 100-200

394 FOLK ART EIDER DRAKE by George Elmer, English Creek Landing, NJ. Original paint and condition. Folky carved root head. 100-200

395 PAIR OF WIDGEON by John Hamilton, West Creek, NJ. Near-mint original paint and unused condition. Both hollow carved with inlet bottom weights. Both nice plump working decoys. Both branded. 200-300

396 THREE WORKING BLACK DUCKS, possibly New England. Two with *JFS* carved in bottoms. Two with keels. Weathered working paint. 75-125

396A RIG OF SIX WORKING PINTAIL DRAKES by Robert Kurkewicz, Manistee, MI. All in good original paint showing some in-use wear. All hollow carved with elongated tails and turned heads. All with inlet bottom weights. All branded and signed. 300-400 Three shown

397 TWO PAIR OF PRIMITIVE DECOYS, probably Louisiana. All retain some working paint. All structurally fair. All with Starr collection stamp on bottom. 50-75 Not shown



396A ~ rig of 6

NOTES



Index

A

Adams, B. 343, 368
Allen, D. 176
Allsop, C. 63

B

Baker, J. 297, 300, 301
Baldwin, J.L. 151
Barkalow, L. 335, 336
Barnegat Bay Decoy Company
31, 32
Berkley, C. 294
Birdsall, A. 60, 62, 77
Birdsall, C. 1, 21-29
Birdsall, E. 358
Birdsall, J. 325, 350, 357, 373
Black, C. 306
Blinebury, J.J. 234
Bowden, J. 274, 313
Bowman, W. 153
Britton, J. 311
Brown, F.C. 30, 42-51, 72
Burkley, C.C. 286

C

Cherry, E. 74
Chesser, G. 82
Clark, R. 258, 259
Conklin, H. 182-188, 253-257
Coradetti, E. 290
Corson, B. 365
Crane, H. 79
Cranmer, J.T. 354, 376
Cranmer, W. 159-167
Crowell, A.E. 168, 169
Currier & Ives 270

D

Dabler, C. 381
Dodge Decoy Factory 39, 40, 41
Downes, J.G. 345
Downes, J.H. 140

E

Elmer, G. 394
English, J. 296
Evans Decoy Factory 38

F

Finney, F. 104
Fitzpatrick, T. 291, 308
Fraser, N. 378
Fulcher, I. 189, 191

G

Gaskill, T. 298, 372
Geis, M. 65, 67, 68, 70
Geonne, W. 250
Gibson, P. 117
Glenn, J. 131

H

Hamilton, J. 314, 390, 392, 393,
395
Hancock, M. 143
Heisler, J. 295
Hendrickson, G. 196-199, 367
Heverin, W. 123
Hickman, C. 348
Holloway, J. 59, 61
Holmes, C. 210
Hooker, T.J. 180
Horner, N.R. 317, 319, 359, 360
Hudson, I. 137, 138, 141
Hutchins, J. 132

I

Inman, L. 195

J

Jenkins, J.J. 355
Jennings, F. 71, 154, 230-233,
237
Jester, D. 136
Jobs, B. 130
Jobs, H. 127
Johnson, L. 324, 333
Johnson, T. 332
Johnson, W. 334
Joiner, C. 114, 115

K

Kilpatrick, H. 299
Kimble, J. 307
King, J. 338, 356, 366
Kirby, K. 391
Kurkewicz, R. 81, 83, 396A

L

Lamson, F. 347
Lewis, R.D. 75
Lincoln, J. 158
Loftin, T. 116

M

Mason Decoy Company 35-37
McLaughlin, L. 283
McLoughlin, J. 284, 285, 308A
Megargee, H.P. 86, 95-98, 125,
155, 174, 179, 201, 202, 204,
208, 209, 211, 212, 244-246,
248, 374
Miller, H. 229
Mitchell, R. 91-94, 99, 106,
Mitchell, R.M. 118, 133
Moir, J. 150

Monk, H. 194
Morehead, B. 243
Mueller, K. 316

O

Ortley, E. 331, 340, 341

P

Parker, E. 342, 382
Perrine, P. 78
Pierce, J. 156
Pope, A. 87, 121, 128, 134, 276

R

Reineri, L. 69, 235, 238
Rhodes, D. 66, 80, 349
Robinson, M. 132

S

Sabatini, R. 84, 88, 101-103,
216-220, 249
Seabrook, B. 177, 251
Seidel, J. 289
Shourds, H.M. 303, 346
Shourds, H.V. 327, 328, 339,
351
Slack, J. and P. 76
Smith, S. 375
Smoker, R.W. 108-112
Soper, S. 344
Sprague, C. 318
Strunk, G. 221-228, 320

T

Tienhenske, D. 148
Trader, C. 292
Truex, R. 327, 353
Turner, C. 362, 363, 364
Tyler, L. 173

U

Updike, J. 377
Urie, J. 89

V

Vincenti, P. 119

W

Ward, L.T. Bros. 144
West, J. 287
Wheeler, C. 149
White, B. 73
Wilber, C. 200
Wildfowler Decoy Company 2-20,
33, 337, 379
Wood, J. 105, 288, 315
Wrenger, O. 329



Conditions of Sale

Property listed for sale in this auction will be sold in accordance with the following terms and conditions.

1. Every effort has been made by Frank & Frank Sporting Collectibles LLC to describe articles offered for sale accurately. However, all property offered is sold "as is" and it is suggested that prospective bidders inspect the property before bidding or call this office for a detailed condition report.
2. A "Buyer's Premium" in the amount of 18% (discounted to 15% for cash or check) shall be added to the successful bid price and is payable by the purchaser as part of the total purchase price.
3. We reserve the right to withdraw any property or alter any catalog description prior to the sale and shall have no liability for such action.
4. We reserve the right to reject any bid. The highest bidder acknowledged by the auctioneer will be the purchaser. Should there be a dispute between bidders, the decision of the auctioneer will be binding.
5. We offer absentee and phone bidding as a service to our clients who are not present at auction. However, we are not responsible for errors or omissions in connection with the execution of such bids.
6. The auctioneer may reject any opening bid which he deems is insufficient and withdraw the article from the sale. The auctioneer may also reject any advance which he decides is insufficient.
7. All items purchased are subject to the 7% New Jersey Sales Tax, unless the purchaser possesses a valid tax exemption number.
8. Payment is due at time of purchase. No property will be released without payment in full. Methods of payment are cash, approved check, and Visa or Master Card.
9. All shipping and insurance charges are the responsibility of the purchaser. Unless otherwise noted, decoys are not sold with stands.
10. By participating in this sale, you indicate your acceptance of the terms and conditions.
11. Any legal conflict arising from this auction will be heard and judged by the court system in the state of New Jersey. NJSA applies to the auction and participants.
12. In the event of a dispute between bidders, the auctioneer reserves the right to determine the successful bidder, or re-offer and resell the disputed item.